

# IHCeasy<sup>®</sup> TPRA1/GPR175 Ready-To-Use IHC Kit

Catalog Number: **KHC3106**

## General Information

Sample type:  
FFPE tissue  
Cited sample type:  
Reactivity:  
Human  
Cited Reactivity:

Assay type:  
Immunohistochemistry  
Primary antibody type:  
Rabbit Polyclonal  
Secondary antibody type:  
Polymer-HRP-Goat anti-Rabbit

## Kit Component

Component	Size	Concentration
Antigen Retrieval Buffer	100 mL	50×
Washing Buffer	100 mL × 2	20×
Blocking Buffer	5 mL	RTU
Primary Antibody	5 mL	RTU
Secondary Antibody	5 mL	RTU
Chromogen Component A	0.2 mL	RTU
Chromogen Component B	4 mL	RTU
Signal Enhancer	5 mL	RTU
Counter Staining Reagent	5 mL	RTU
Mounting Media	5 mL	RTU
Control Slide	1 slide (Optional)	FFPE
Datasheet	1 Copy	
Manual	1 Copy	

## Storage Instructions

All the reagents are stored at 2-8°C. The kit is stable for 6 months from the date of receipt.

## Background

GPR175, also known as TPRA1 or TPRA40, is a transmembrane protein. GPR175 was first cloned as a GLP-1 receptor homolog in 3T3-L1 adipocytes and is also expressed in tissues that require Hh signaling during development, including the heart, brain, lung, pancreas, and muscle. Endogenous GPR175 localizes to cilia in a Hh-dependent manner, where it can interact with (constitutively) ciliary Gai1 to inhibit the local production of cAMP by adenylyl cyclase.

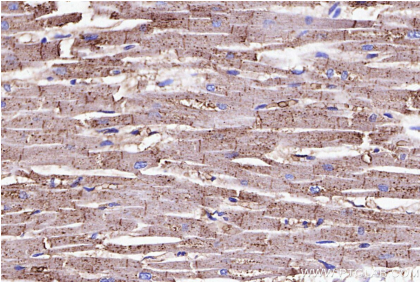
## Synonyms

GPR175, Integral membrane protein GPR175, PP6566, TMEM227, TPRA1

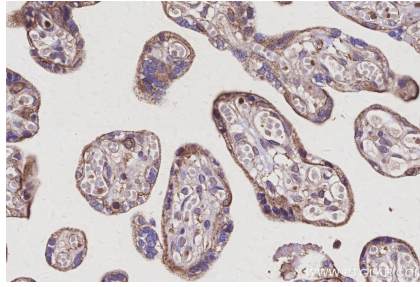
For technical support and original validation data for this product please contact:  
T: 1 (888) 4PTGLAB (1-888-478-4522) (toll free in USA), or 1(312) 455-8498 (outside USA)  
E: [proteintech@ptglab.com](mailto:proteintech@ptglab.com)  
W: [ptglab.com](http://ptglab.com)

This product is exclusively available under Proteintech Group brand and is not available to purchase from any other manufacturer.

## Selected Validation Data



Immunohistochemical analysis of paraffin-embedded human heart tissue slide using KHC3106 (TPRA1/GPR175 IHC Kit).



Immunohistochemical analysis of paraffin-embedded human placenta tissue slide using KHC3106 (TPRA1/GPR175 IHC Kit).