

IHCeasy[®] INSM2 Ready-To-Use IHC Kit

Catalog Number: **KHC3111**

General Information

Sample type:
FFPE tissue

Cited sample type:

Reactivity:
Human, Rat

Cited Reactivity:

Assay type:
Immunohistochemistry

Primary antibody type:
Rabbit Polyclonal

Secondary antibody type:
Polymer-HRP-Goat anti-Rabbit

Kit Component

Component	Size	Concentration
Antigen Retrieval Buffer	100 mL	50×
Washing Buffer	100 mL ×2	20×
Blocking Buffer	5 mL	RTU
Primary Antibody	5 mL	RTU
Secondary Antibody	5 mL	RTU
Chromogen Component A	0.2 mL	RTU
Chromogen Component B	4 mL	RTU
Signal Enhancer	5 mL	RTU
Counter Staining Reagent	5 mL	RTU
Mounting Media	5 mL	RTU
Control Slide	1 slide (Optional)	FFPE
Datasheet	1 Copy	
Manual	1 Copy	

Storage Instructions

All the reagents are stored at 2-8°C. The kit is stable for 6 months from the date of receipt.

Background

INSM2 (Insulinoma-associated protein 2) is a zinc-finger protein belonging to the transcription factor family and has transcriptional repressive functions. It may exert growth-inhibitory or tumor-suppressive effects in hepatocytes and certain neurons. The primary function of INSM2 involves the regulation of gene expression, particularly the repression of insulin gene expression in non-pancreatic cells. Additionally, INSM2 is upregulated in neuroblastoma and is associated with poor prognosis. It promotes tumor development by affecting lipid metabolism through the regulation of the mTOR signaling pathway.

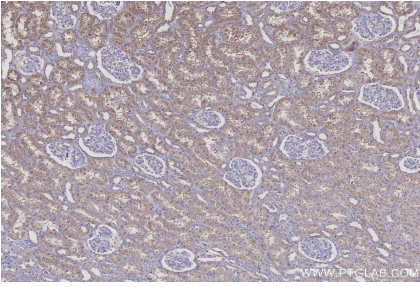
Synonyms

IA6, INSM Transcriptional Repressor 2, Insulinoma-associated protein 2, Nbla106, Zinc finger protein IA-6

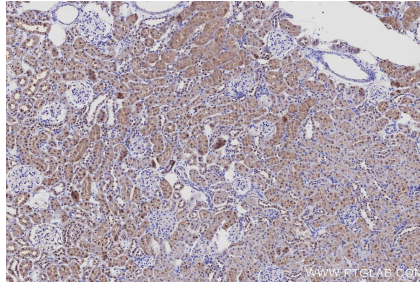
For technical support and original validation data for this product please contact:
T: 1 (888) 4PTGLAB (1-888-478-4522) (toll free in USA), or 1(312) 455-8498 (outside USA)
E: proteintech@ptglab.com
W: ptglab.com

This product is exclusively available under Proteintech Group brand and is not available to purchase from any other manufacturer.

Selected Validation Data



Immunohistochemical analysis of paraffin-embedded human kidney tissue slide using KHC3111 (INSM2 IHC Kit).



Immunohistochemical analysis of paraffin-embedded rat kidney tissue slide using KHC3111 (INSM2 IHC Kit).