

IHCeasy[®] SSR3 Ready-To-Use IHC Kit

Catalog Number: **KHC3121**

General Information

Sample type:
FFPE tissue
Cited sample type:
Reactivity:
Human, Mouse, Rat
Cited Reactivity:

Assay type:
Immunohistochemistry
Primary antibody type:
Rabbit Polyclonal
Secondary antibody type:
Polymer-HRP-Goat anti-Rabbit

Kit Component

Component	Size	Concentration
Antigen Retrieval Buffer	100 mL	50×
Washing Buffer	100 mL ×2	20×
Blocking Buffer	5 mL	RTU
Primary Antibody	5 mL	RTU
Secondary Antibody	5 mL	RTU
Chromogen Component A	0.2 mL	RTU
Chromogen Component B	4 mL	RTU
Signal Enhancer	5 mL	RTU
Counter Staining Reagent	5 mL	RTU
Mounting Media	5 mL	RTU
Control Slide	1 slide (Optional)	FFPE
Datasheet	1 Copy	
Manual	1 Copy	

Storage Instructions

All the reagents are stored at 2-8°C. The kit is stable for 6 months from the date of receipt.

Background

Mammalian TRAP is a heterotetrameric membrane protein complex which comprised of four membrane proteins/subunits: alpha, beta, gamma, and delta. SSR3 is also known as translocon-associated protein subunit gamma (TRAPG). The signal sequence receptor (SSR) is a glycosylated endoplasmic reticulum (ER) membrane receptor associated with protein translocation across the ER membrane. SSR3 assumes a central position in the mammalian TRAP complex, binding to the ribosome on the cytosolic face of the ER membrane and coordinating the remaining TRAP subunits with the ribosome and the other translocon components.

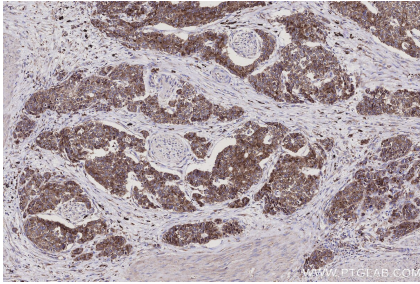
Synonyms

SSR 3, SSR gamma, SSR-gamma, Translocon-associated protein subunit gamma, TRAP gamma

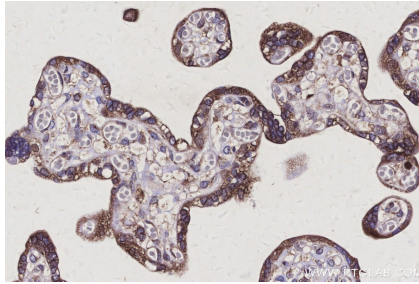
For technical support and original validation data for this product please contact:
T: 1 (888) 4PTGLAB (1-888-478-4522) (toll free in USA), or 1(312) 455-8498 (outside USA)
E: proteintech@ptglab.com
W: ptglab.com

This product is exclusively available under Proteintech Group brand and is not available to purchase from any other manufacturer.

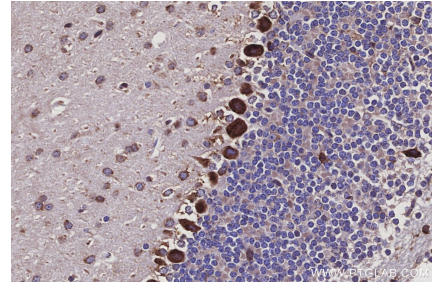
Selected Validation Data



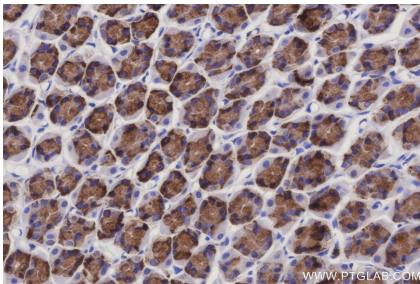
Immunohistochemical analysis of paraffin-embedded human stomach cancer tissue slide using KHC3121 (SSR3 IHC Kit).



Immunohistochemical analysis of paraffin-embedded human placenta tissue slide using KHC3121 (SSR3 IHC Kit).



Immunohistochemical analysis of paraffin-embedded mouse cerebellum tissue slide using KHC3121 (SSR3 IHC Kit).



Immunohistochemical analysis of paraffin-embedded rat stomach tissue slide using KHC3121 (SSR3 IHC Kit).