

# IHCeasy<sup>®</sup> ARHGAP23 Ready-To-Use IHC Kit

Catalog Number: **KHC3130**

## General Information

**Sample type:**  
FFPE tissue

**Cited sample type:**

**Reactivity:**  
Human, Mouse

**Cited Reactivity:**

**Assay type:**  
Immunohistochemistry

**Primary antibody type:**  
Rabbit Polyclonal

**Secondary antibody type:**  
Polymer-HRP-Goat anti-Rabbit

## Kit Component

| Component                | Size               | Concentration |
|--------------------------|--------------------|---------------|
| Antigen Retrieval Buffer | 100 mL             | 50×           |
| Washing Buffer           | 100 mL × 2         | 20×           |
| Blocking Buffer          | 5 mL               | RTU           |
| Primary Antibody         | 5 mL               | RTU           |
| Secondary Antibody       | 5 mL               | RTU           |
| Chromogen Component A    | 0.2 mL             | RTU           |
| Chromogen Component B    | 4 mL               | RTU           |
| Signal Enhancer          | 5 mL               | RTU           |
| Counter Staining Reagent | 5 mL               | RTU           |
| Mounting Media           | 5 mL               | RTU           |
| Control Slide            | 1 slide (Optional) | FFPE          |
| Datasheet                | 1 Copy             |               |
| Manual                   | 1 Copy             |               |

## Storage Instructions

All the reagents are stored at 2-8°C. The kit is stable for 6 months from the date of receipt.

## Background

ARHGAP23 (Rho GTPase Activating Protein 23) belongs to the family of Rho GTPase activating proteins. The protein functions as a GTPase-activating factor by converting Rho class GTPases into their inactive GDP-bound state. ARHGAP23 is involved in the Rho GTPase signaling pathway, affecting processes such as cytoskeletal reorganization, cell migration, and cell proliferation. In non-small cell lung cancer, the expression of ARHGAP23 is associated with tumor immune infiltration and prognosis, and its role in tumor development has attracted attention. Mutations in this gene are related to a variety of diseases, including certain types of cancer and neurological disorders.

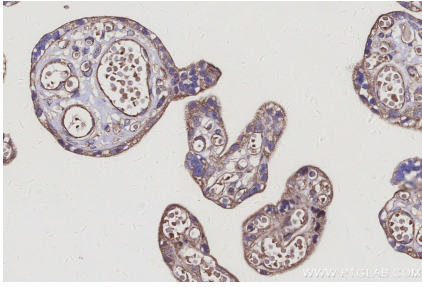
## Synonyms

KIAA1501, Rho GTPase Activating Protein 23, Rho GTPase-activating protein 23, Rho-type GTPase-activating protein 23

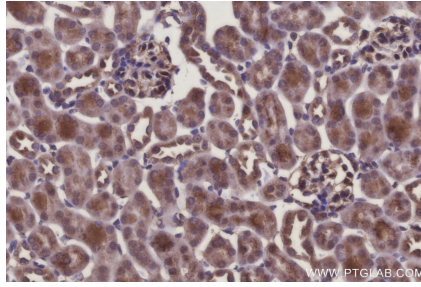
For technical support and original validation data for this product please contact:  
T: 1 (888) 4PTGLAB (1-888-478-4522) (toll free in USA), or 1(312) 455-8498 (outside USA)  
E: [proteintech@ptglab.com](mailto:proteintech@ptglab.com)  
W: [ptglab.com](http://ptglab.com)

This product is exclusively available under Proteintech Group brand and is not available to purchase from any other manufacturer.

## Selected Validation Data



Immunohistochemical analysis of paraffin-embedded human placenta tissue slide using KHC3130 (ARHGAP23 IHC Kit).



Immunohistochemical analysis of paraffin-embedded mouse kidney tissue slide using KHC3130 (ARHGAP23 IHC Kit).