

IHCeasy[®] NDUFA10 Ready-To-Use IHC Kit

Catalog Number: **KHC3155**

General Information

Sample type:
FFPE tissue

Cited sample type:

Reactivity:
Human, Mouse, Rat

Cited Reactivity:

Assay type:
Immunohistochemistry

Primary antibody type:
Rabbit Polyclonal

Secondary antibody type:
Polymer-HRP-Goat anti-Rabbit

Kit Component

Component	Size	Concentration
Antigen Retrieval Buffer	100 mL	50×
Washing Buffer	100 mL × 2	20×
Blocking Buffer	5 mL	RTU
Primary Antibody	5 mL	RTU
Secondary Antibody	5 mL	RTU
Chromogen Component A	0.2 mL	RTU
Chromogen Component B	4 mL	RTU
Signal Enhancer	5 mL	RTU
Counter Staining Reagent	5 mL	RTU
Mounting Media	5 mL	RTU
Control Slide	1 slide (Optional)	FFPE
Datasheet	1 Copy	
Manual	1 Copy	

Storage Instructions

All the reagents are stored at 2-8°C. The kit is stable for 6 months from the date of receipt.

Background

NDUFA10 (NADH:ubiquinone oxidoreductase subunit A10) is a subunit of mitochondrial complex I of the electron transport chain, encoding a protein with NADH dehydrogenase and oxidoreductase activity. This protein transfers electrons from NADH to the respiratory chain. Mutations in the NDUFA10 gene are associated with Leigh syndrome, a common mitochondrial energy metabolism disorder in children. Additionally, the expression levels of NDUFA10 are related to the occurrence and prognosis of various diseases. For example, in Alzheimer's disease, its low expression is associated with increased dementia severity. In prostate cancer, low expression of NDUFA10 predicts a poor prognosis.

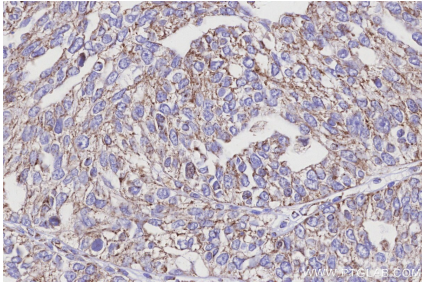
Synonyms

CI-42kD, Complex I-42kD, NADH dehydrogenase [ubiquinone] 1 alpha subcomplex subunit 10, mitochondrial, NADH:Ubiquinone Oxidoreductase Subunit A10, NADH-ubiquinone oxidoreductase 42 kDa subunit

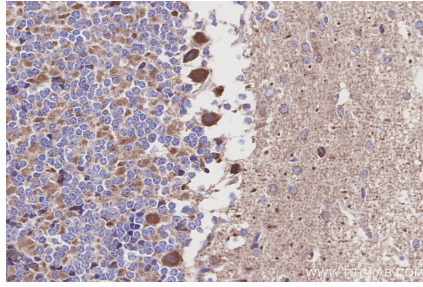
For technical support and original validation data for this product please contact:
T: 1 (888) 4PTGLAB (1-888-478-4522) (toll free in USA), or 1(312) 455-8498 (outside USA)
E: proteintech@ptglab.com
W: ptglab.com

This product is exclusively available under Proteintech Group brand and is not available to purchase from any other manufacturer.

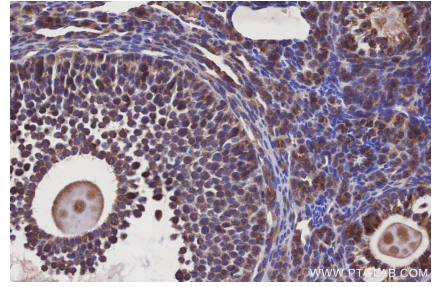
Selected Validation Data



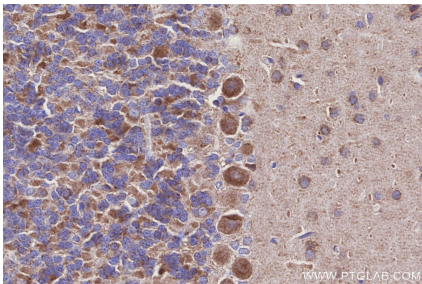
Immunohistochemical analysis of paraffin-embedded human ovary cancer tissue slide using KHC3155 (NDUFA10 IHC Kit).



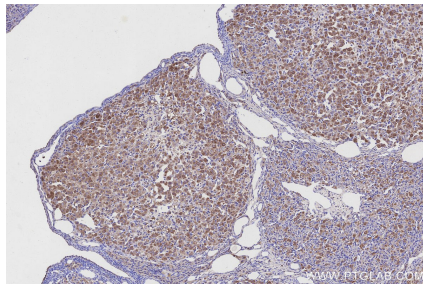
Immunohistochemical analysis of paraffin-embedded mouse cerebellum tissue slide using KHC3155 (NDUFA10 IHC Kit).



Immunohistochemical analysis of paraffin-embedded mouse ovary tissue slide using KHC3155 (NDUFA10 IHC Kit).



Immunohistochemical analysis of paraffin-embedded rat cerebellum tissue slide using KHC3155 (NDUFA10 IHC Kit).



Immunohistochemical analysis of paraffin-embedded rat ovary tissue slide using KHC3155 (NDUFA10 IHC Kit).