

IHCeasy[®] CYP11A1 Ready-To-Use IHC Kit

Catalog Number: **KHC3170**

General Information

Sample type:
FFPE tissue
Cited sample type:
Reactivity:
Human, Mouse, Rat
Cited Reactivity:

Assay type:
Immunohistochemistry
Primary antibody type:
Mouse Monoclonal
Secondary antibody type:
Polymer-HRP-Goat anti-Mouse

Kit Component

Component	Size	Concentration
Antigen Retrieval Buffer	100 mL	50×
Washing Buffer	100 mL ×2	20×
Blocking Buffer	5 mL	RTU
Primary Antibody	5 mL	RTU
Secondary Antibody	5 mL	RTU
Chromogen Component A	0.2 mL	RTU
Chromogen Component B	4 mL	RTU
Signal Enhancer	5 mL	RTU
Counter Staining Reagent	5 mL	RTU
Mounting Media	5 mL	RTU
Control Slide	1 slide (Optional)	FFPE
Datasheet	1 Copy	
Manual	1 Copy	

Storage Instructions

All the reagents are stored at 2-8°C. The kit is stable for 6 months from the date of receipt.

Background

CYP11A1 is also known as cytochrome P450C11A1, cytochrome P450sc and cytochrome P450, subfamily XIA. It is the first enzyme of all steroidogenic pathways, its elimination results in syndromes of steroid deficiency, including electrolyte imbalance, aberrant gene regulation, and suppression of male sex organ development. Expression of CYP11A1 has been a useful tool for monitoring the differentiation state of cells from various endocrine tissues.

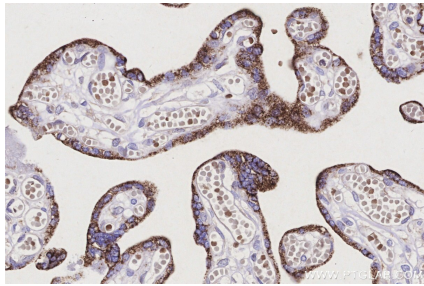
Synonyms

Cholesterol desmolase, Cholesterol side-chain cleavage enzyme, mitochondrial, CYP11A, CYPXIA1, Cytochrome P450 11A1

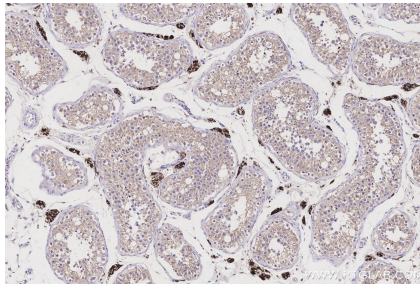
For technical support and original validation data for this product please contact:
T: 1 (888) 4PTGLAB (1-888-478-4522) (toll free in USA), or 1(312) 455-8498 (outside USA)
E: proteintech@ptglab.com
W: ptglab.com

This product is exclusively available under Proteintech Group brand and is not available to purchase from any other manufacturer.

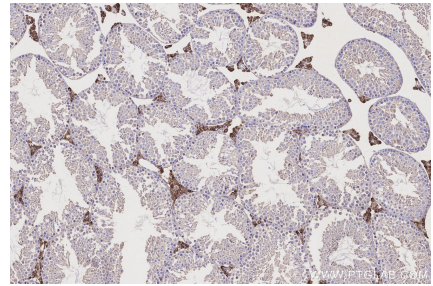
Selected Validation Data



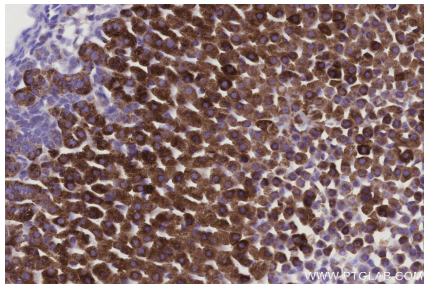
Immunohistochemical analysis of paraffin-embedded human placenta tissue slide using KHC3170 (CYP11A1 IHC Kit).



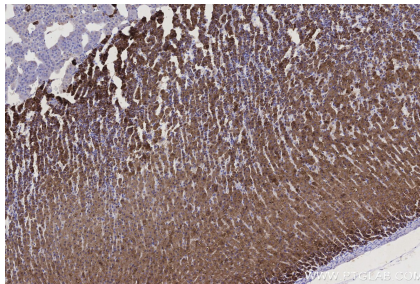
Immunohistochemical analysis of paraffin-embedded human testis tissue slide using KHC3170 (CYP11A1 IHC Kit).



Immunohistochemical analysis of paraffin-embedded mouse testis tissue slide using KHC3170 (CYP11A1 IHC Kit).



Immunohistochemical analysis of paraffin-embedded mouse adrenal gland tissue slide using KHC3170 (CYP11A1 IHC Kit).



Immunohistochemical analysis of paraffin-embedded rat adrenal gland tissue slide using KHC3170 (CYP11A1 IHC Kit).