

Human CD4 Magnetic Beads Kit

Catalog Number: KMS002

Description

CD4 is a coreceptor of T cell receptor in T lymphocytes to recognize antigens displayed by an antigen presenting cell in the context of class II MHC molecules. It is observed that 25%-65% human lymphocytes are CD4 positive. Human CD4 Magnetic Beads Kit is used for isolation or depletion of human CD4 T lymphocytes from PBMC, whole blood, or other sample types. Following incubation with biotinylated human CD4 antibody and Streptavidin magnetic beads, the cell sample is placed on a magnet. CD4+ cells remain attached to magnetic beads after separation and can be used for downstream applications, such as cell expansion, but not suitable for flow cytometry. CD4- cells remain in supernatant and can also be used for further application.

Components

KMS002-10:

- MS001-10: 100µL 10mg/mL streptavidin magnetic beads
- MS65143-10: 100µL 0.1mg/mL Biotin-CD4 (clone: RPA-T4)

KMS002-100:

- MS001-100: 1mL 10mg/mL streptavidin magnetic beads
- MS65143-100: 1mL 0.1mg/mL Biotin-CD4 (clone: RPA-T4)

Package

10test/100test

Storage

2-8°C

Reactivity

Human

Recommend usage

10mL Biotin-CD4 antibody and 10mL streptavidin beads for 1×10^7 cells

For technical support and original validation data for this product please contact:

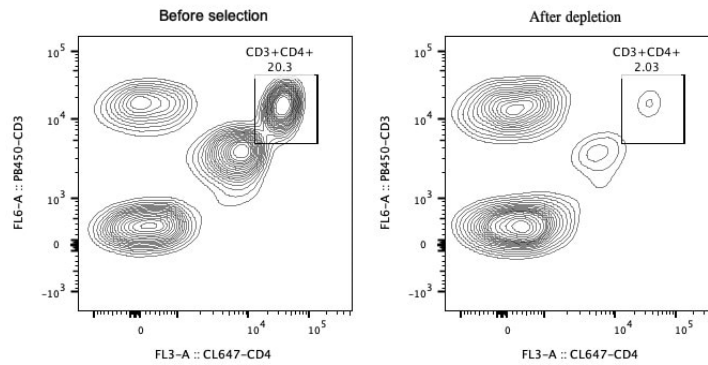
T: 1 (888) 4PTGLAB(1-888-478-4522)(toll free in USA), or 1(312) 455-8498(outside USA)

E: proteintech@ptglab.com
W: ptglab.com

This product is exclusively available under Proteintech Group brand and is not available to purchase from any other manufacturer.

Validation Data

Representative example of enrichment and depletion



Following depletion of CD4⁺ cells, supernatant cell suspension was stained with PB450-CD3(clone: HIT3a) and CL647-CD4(clone: OKT4). CD45⁺ cells are gated in the analysis. Left panel: CD3+CD4⁺ cells before selection. Right panel: CD3+CD4⁺ cells after depletion. Human CD4 magnetic beads kit is tested using PBMC from three donors.

For technical support and original validation data for this product please contact:

T: 1 (888) 4PTGLAB(1-888-478-4522)(toll free in USA), or 1(312) 455-8498(outside USA)

E: proteintech@ptglab.com
W: ptglab.com

This product is exclusively available under Proteintech Group brand and is not available to purchase from any other manufacturer.