

Human CD4 Isolation Kit

Catalog Number:KMS302

Description

CD4 is a 55 kDa glycoprotein that is a co-receptor for T cell receptor in T lymphocytes. CD4+ cells are essential for achieving effective immune response by associating with class II MHC molecules. 25%-65% human lymphocytes are CD4+. Human CD4 Isolation Kit is designed to isolate untouched CD4+ T helper lymphocytes. It contains a biotin labeled antibody cocktail and streptavidin conjugated magnetic beads. Through incubation of samples with biotin labeled antibody cocktail followed by incubation of streptavidin beads, the magnetically labeled non CD4+ cells are retained in the tube by magnetic separator. The untouched CD4+ T helper cells are collected in supernatant. Any downstream application can be performed on CD4+ cells after separation, such as Flow Cytometry and *in-vitro* culture and expansion.

Components

KMS302-10:

· MS302A-10: 300 µL Human CD4 Isolation Biotin Antibody Cocktail (CD8, CD19, CD14, CD56, CD20, CD11b, CD16, CD36, CD235a, CD123, TCR γδ)

· MS302B-10: 300µL streptavidin magnetic beads

KMS302-100:

· MS302A-100: 3mL Human CD4 Selection Biotin Antibody Cocktail (CD8, CD19, CD14, CD56, CD20, CD11b, CD16, CD36, CD235a, CD123, TCR γδ)

· MS302B-100: 3mL streptavidin magnetic beads

Package

10test/100test

Storage

2-8°C

Reactivity

Human

Recommend usage

30µL biotin labeled antibody cocktail and 30µL streptavidin beads for 1×10^7 cells.

For technical support and original validation data for this product please contact:

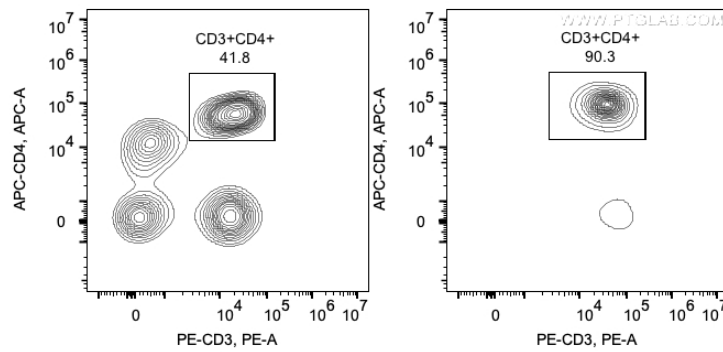
T: 1 (888) 4PTGLAB(1-888-478-4522)(toll free in USA), or 1(312) 455-8498(outside USA)

E: proteintech@ptglab.com
W: ptglab.com

This product is exclusively available under Proteintech Group brand and is not available to purchase from any other manufacturer.

Validation Data

Representative example of enrichment



Following cell separation (enrichment), cell suspension was stained with FITC-CD45(F10-89-4), PE-CD3(UCHT1) and APC-CD4(OKT4) antibodies. All CD45+ cells are gated in the analysis. Left panel: CD3+CD4+ cells before selection. Right panel: CD3+CD4+ cells after selection. Human CD4 selection kit is tested using PBMC from three donors.

For technical support and original validation data for this product please contact:

T: 1 (888) 4PTGLAB(1-888-478-4522)(toll free in USA), or 1(312) 455-8498(outside USA)

E: proteintech@ptglab.com
W: ptglab.com

This product is exclusively available under Proteintech Group brand and is not available to purchase from any other manufacturer.