

# Human CD8 Isolation Kit

Catalog Number: KMS303

## Description

CD8 is a cell surface glycoprotein found on most cytotoxic T lymphocytes that mediates efficient cell-cell interactions within immune system. CD8 acts as a coreceptor with T cell receptor on T lymphocyte to recognize antigens displayed by antigen presenting cell in the context MHC II molecules. 10%-30% human lymphocytes are CD8 positive. Human CD8 Isolation Kit is designed to isolate untouched CD8+ T toxicity lymphocytes which contains a biotin labeled antibody cocktail and streptavidin conjugated magnetic beads. Through incubation of samples with biotin antibody cocktail followed by incubation of streptavidin beads, the magnetically labeled non CD8+ cells will be retained in the tube by magnetic separator. The untouched CD8+ T toxicity cells are collected in supernatant. Any downstream application can be performed on CD8+ cells after separation, such as Flow Cytometry and in vitro culture.

## Components

KMS303-10:

- MS303A-10: 300 µL Human CD8 Isolation biotin labeled human CD8 selection antibody cocktail (CD4, CD19, CD14, CD56, CD20, CD11b, CD16, CD36, CD235a, CD123, TCR γδ)
- MS303B-10: 300µL streptavidin magnetic beads

KMS303-100:

- MS303A-100: 3mL Human CD8 Isolation biotin labeled human CD8 selection antibody cocktail (CD4, CD19, CD14, CD56, CD20, CD11b, CD16, CD36, CD235a, CD123, TCR γδ)
- MS303B-100: 3mL streptavidin magnetic beads

## Package

10test/100test

## Storage

2-8°C

## Reactivity

Human

## Recommend usage

30µL biotin labeled antibody cocktail and 30µL streptavidin beads for  $1 \times 10^7$  cells.

For technical support and original validation data for this product please contact:

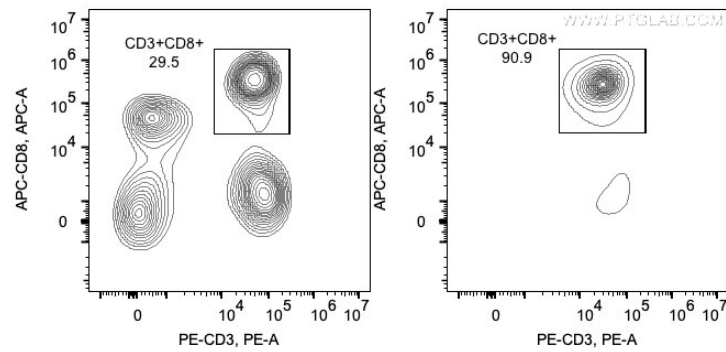
T: 1 (888) 4PTGLAB(1-888-478-4522)(toll free in USA), or 1(312) 455-8498(outside USA)

E: [proteintech@ptglab.com](mailto:proteintech@ptglab.com)  
W: [ptglab.com](http://ptglab.com)

This product is exclusively available under Proteintech Group brand and is not available to purchase from any other manufacturer.

## Validation Data

Representative example of enrichment



Following cell separation, cell suspension was stained with FITC-CD45(F10-89-4), PE-CD3(UCHT1) and APC-CD8(OKT8) antibodies. All CD45+ cells are gated in the analysis. Left panel: CD3+CD8+ cells before selection. Right panel: CD3+CD8+ cells after selection. Human CD4 selection kit is tested using PBMC from three donors.

**For technical support and original validation data for this product please contact:**

T: 1 (888) 4PTGLAB(1-888-478-4522)(toll free in USA), or 1(312) 455-8498(outside USA)

E: [proteintech@ptglab.com](mailto:proteintech@ptglab.com)  
W: [ptglab.com](http://ptglab.com)

**This product is exclusively available under Proteintech Group brand and is not available to purchase from any other manufacturer.**