

For Research Use Only.

Human CD8 Memory T Cell Isolation Kit

Catalog Number:KMS307



Description

Memory T cells are antigen-exposed T lymphocytes which would mediate fast and robust response upon repeat encounter with antigen. Human CD8 Memory T Cell Isolation kit is designed to isolate untouched CD8+ memory T lymphocytes which contains a biotin labeled antibody cocktail and streptavidin conjugated magnetic beads. Through incubation of samples with biotin antibody cocktail followed by incubation of streptavidin beads, the magnetically labeled non CD8+ memory cells will be retained in the tube by magnetic separator. The untouched CD8+ T memory cells are collected in supernatant. Any downstream application can be performed on CD8+ memory cells after separation, such as Flow Cytometry and in vitro culture.

Components

KMS307-10:

-MS307A-10: 300 µL Human CD8 Isolation Biotin Antibody Cocktail (CD8, CD19, CD14, CD56, CD45RA, CD20, CD11b, CD16, CD36, CD235a, CD123, TCR γδ)

-MS307B-10: 300µL streptavidin magnetic beads

KMS307-100:

-MS307A-100: 3mL Human CD8 Isolation Biotin Antibody Cocktail (CD8, CD19, CD14, CD56, CD45RA, CD20, 11b, CD16, CD36, CD235a, CD123, TCR γδ)

-MS307B-100: 3mL streptavidin magnetic beads

Package

10test/100test

Storage

2-8°C

Reactivity

Human

Beads diameter

2.7 µm

Recommend usage

30µL biotin labeled antibody cocktail and 30µL streptavidin beads for 1×10^7 PBMCs

For technical support and original validation data for this product please contact:

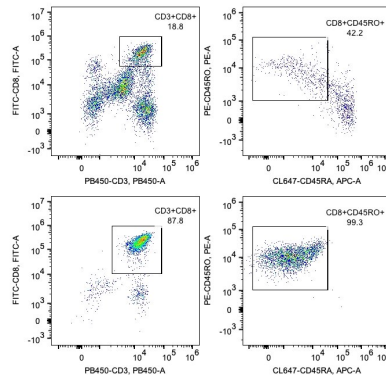
T: 1 (888) 4PTGLAB(1-888-478-4522)(toll free in USA), or 1(312) 455-8498(outside USA)

E: proteintech@ptglab.com
W: ptglab.com

This product is exclusively available under Proteintech Group brand and is not available to purchase from any other manufacturer.

Validation Data

Representative example of enrichment



Following cell separation, cell suspension was stained with PB450-CD3 (UCHT1), FITC-CD8 (OKT8), PE-CD45RO (UCHL1) and CL647-CD45RA (HI100) antibodies. All viable cells are gated in the analysis. Left upper panel: CD3+CD8+ cells before selection; right upper panel: CD45RO+ cells within CD8+ cells. Left lower panel: CD3+CD8+ cells after selection; right lower panel: CD45RO+ cells within CD8+ cells. Human CD8 memory T cell isolation kit is tested using PBMC from three donors.

For technical support and original validation data for this product please contact:

T: 1 (888) 4PTGLAB(1-888-478-4522)(toll free in USA), or 1(312) 455-8498(outside USA)

E: proteintech@ptglab.com
W: ptglab.com

This product is exclusively available under Proteintech Group brand and is not available to purchase from any other manufacturer.