

CD147 Recombinant Matched Antibody Pair, PBS Only

Catalog Number: **MP00004-1**

Capture Antibody Information

Catalog Number:
82909-6-PBS

Host:
Rabbit

Isotype:
IgG

Purification Method:
Protein A purification

Clone ID:
230046G9

Reactivity:
human

Conjugate:
Unconjugated

Full name:
basigin (Ok blood group)

Gene ID:
682

Detection Antibody Information

Catalog Number:
82909-4-PBS

Host:
Rabbit

Isotype:
IgG

Purification Method:
Protein A purification

Clone ID:
230046D12

Reactivity:
human

GenBank:
BC009040

Conjugate:
Unconjugated

Full name:
basigin (Ok blood group)

Gene ID:
682

Applications

Tested Applications:
Cytometric bead array, Sandwich
ELISA

Range:
0.625-20 ng/mL (Cytometric Bead
Array)
20-1250 pg/mL (Sandwich ELISA)

Recommended Dilutions:
It is recommended that this reagent
should be titrated in each testing
system to obtain optimal results.

Product Information

MP00004-1 targets CD147 in immunoassays as a matched antibody pair. Validated in Cytometric bead array, Sandwich ELISA.

Capture antibody: CD147 Recombinant antibody, PBS Only (Capture) 82909-6-PBS (230046G9). 100 µg. Concentration 1 mg/mL.

Detection antibody: CD147 Recombinant antibody, PBS Only (Capture/Detector) 82909-4-PBS (230046D12). 100 µg. Concentration 1 mg/mL.

Unconjugated rabbit recombinant monoclonal antibody pair in PBS only storage buffer at a concentration of 1 mg/mL, ready for conjugation. Created using Proteintech's proprietary in-house recombinant technology. Recombinant production enables unrivalled batch-to-batch consistency, easy scale-up, and future security of supply.

Matched antibody pairs are designed for use in a variety of assays and platforms that require matched antibody pairs.

Antibody use should be optimized for each application and assay.

Storage

Storage:
Store at -80°C.
Storage buffer:
PBS only

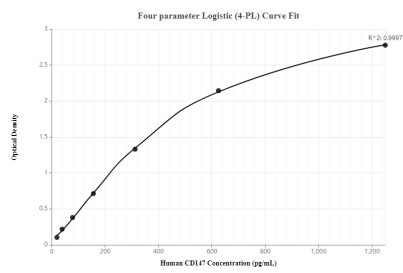
For technical support and original validation data for this product please contact:

T: 1 (888) 4PTGLAB (1-888-478-4522) (toll free
in USA), or 1(312) 455-8498 (outside USA)

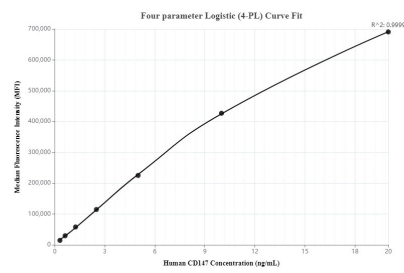
E: proteintech@ptglab.com
W: ptglab.com

This product is exclusively available under Proteintech Group brand and is not available to purchase from any other manufacturer.

Selected Validation Data



Sandwich ELISA standard curve of MP00004-1, CD147 Recombinant Matched Antibody Pair, PBS Only. Capture antibody: 82909-6-PBS. Detection antibody: 82909-4-PBS. Standard: Eg0436. Range: 20-1250 pg/mL.



Cytometric bead array standard curve of MP00004-1, CD147 Recombinant Matched Antibody Pair, PBS Only. Capture antibody: 82909-6-PBS. Detection antibody: 82909-4-PBS. Standard: Eg0436. Range: 0.625-20 ng/mL.