

VEGFR2/KDR Recombinant Matched Antibody Pair, PBS Only

Catalog Number: MP00012-3

Capture Antibody Information

Catalog Number:
83049-2-PBS

Host:
Rabbit

Isotype:
IgG

Purification Method:
Protein A purification

Clone ID:
230238D2

Reactivity:
human

Conjugate:
Unconjugated

Full name:
kinase insert domain receptor (a type III receptor tyrosine kinase)

Gene ID:
3791

Affinity:
 $K_D = 1.15 \times 10^{-9} \text{M}$
 $K_{off} = 2.30 \times 10^{-4} \text{M}$
 $K_{on} = 2.00 \times 10^5 \text{M}$

Detection Antibody Information

Catalog Number:
83049-5-PBS

Host:
Rabbit

Isotype:
IgG

Purification Method:
Protein A purification

Clone ID:
230238E8

Reactivity:
human

GenBank:
NM_002253

Conjugate:
Unconjugated

Full name:
kinase insert domain receptor (a type III receptor tyrosine kinase)

Gene ID:
3791

Applications

Tested Applications:
Sandwich ELISA

Range:
78.1-5000 pg/mL (Sandwich ELISA)

Recommended Dilutions:
It is recommended that this reagent should be titrated in each testing system to obtain optimal results.

Product Information

MP00012-3 targets VEGFR2/KDR in immunoassays as a matched antibody pair. Validated in Sandwich ELISA.

Capture antibody: VEGFR2/KDR Recombinant antibody, PBS Only (Capture) 83049-2-PBS (230238D2). 100 µg. Concentration 1 mg/mL.

Detection antibody: VEGFR2/KDR Recombinant antibody, PBS Only (Detector) 83049-5-PBS (230238E8). 100 µg. Concentration 1 mg/mL.

Alternative VEGFR2/KDR matched antibody pairs: MP00012-2, MP00394-1, MP00394-2, MP00394-3, MP50080-1

Unconjugated rabbit recombinant monoclonal antibody pair in PBS only storage buffer at a concentration of 1 mg/mL, ready for conjugation. Created using Proteintech's proprietary in-house recombinant technology.

Recombinant production enables unrivalled batch-to-batch consistency, easy scale-up, and future security of supply.

Matched antibody pairs are designed for use in a variety of assays and platforms that require matched antibody pairs.

Antibody use should be optimized for each application and assay.

Storage

Storage:
Store at -80°C.

Storage buffer:
PBS only

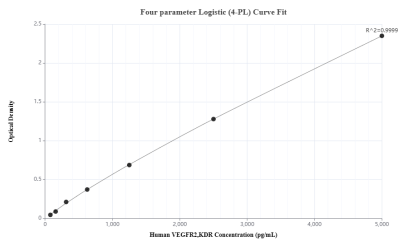
For technical support and original validation data for this product please contact:

T: 1 (888) 4PTGLAB (1-888-478-4522) (toll free in USA), or 1(312) 455-8498 (outside USA)

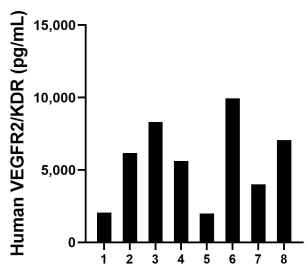
E: proteintech@ptglab.com
W: ptglab.com

This product is exclusively available under Proteintech Group brand and is not available to purchase from any other manufacturer.

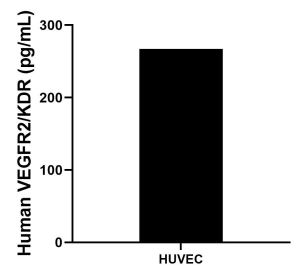
Selected Validation Data



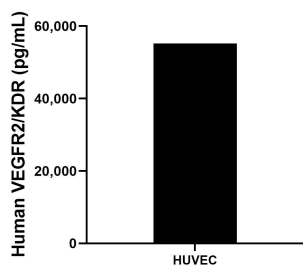
Sandwich ELISA standard curve of MP00012-3, Human VEGFR2/KDR Recombinant Matched Antibody Pair - PBS only. 83049-2-PBS was coated to a plate as the capture antibody and incubated with serial dilutions of standard Eg0218.83049-5-PBS was HRP conjugated as the detection antibody. Range: 78.1-5000 pg/mL



Plasma of eight individual healthy human donors was measured. The human VEGFR2/KDR concentration of detected samples was determined to be 5,643.5 ng/mL with a range of 1,988.2 - 9,946.0 pg/mL



HUVEC was cultured in RPMI supplemented with 10% fetal bovine serum, 50 μ M β -mercaptoethanol, 2 mM L-glutamine, 100 U/mL penicillin, and 100 μ g/mL streptomycin sulfate. An aliquot of the cell culture supernatant was removed, assayed for human VEGFR2/KDR, and measured 267.3 pg/mL



The mean human VEGFR2/KDR concentration was determined to be 55,216.6 pg/mL in HUVEC cell extract based on a 0.4 mg/mL extract load.