

MTA3 Recombinant Matched Antibody Pair, PBS Only

Catalog Number: **MP00017-2**

Capture Antibody Information

Catalog Number:
83042-3-PBS
Host:
Rabbit
Isotype:
IgG
Purification Method:
Protein A purification

Clone ID:
230350D12
Reactivity:
human, mouse
Immunogen Catalog Number:
Ag6400

Conjugate:
Unconjugated
Full name:
metastasis associated 1 family, member 3
Gene ID:
57504

Detection Antibody Information

Catalog Number:
83042-1-PBS
Host:
Rabbit
Isotype:
IgG
Purification Method:
Protein A purification

Clone ID:
230350A8
Reactivity:
human
GenBank:
BC053631
Immunogen Catalog Number:
Ag6400

Conjugate:
Unconjugated
Full name:
metastasis associated 1 family, member 3
Gene ID:
57504

Applications

Tested Applications:
Cytometric bead array, Sandwich ELISA

Range:
0.625-20 ng/mL (Cytometric Bead Array)
3.13-200 ng/mL (Sandwich ELISA)

Recommended Dilutions:
It is recommended that this reagent should be titrated in each testing system to obtain optimal results.

Product Information

MP00017-2 targets MTA3 in immunoassays as a matched antibody pair. Validated in Cytometric bead array, Sandwich ELISA.

Capture antibody: MTA3 Recombinant antibody, PBS Only (Capture) 83042-3-PBS (230350D12). 100 µg. Concentration 1 mg/mL.

Detection antibody: MTA3 Recombinant antibody, PBS Only (Detector) 83042-1-PBS (230350A8). 100 µg. Concentration 1 mg/mL.

Alternative MTA3 matched antibody pairs: MP00017-1, MP00017-3

Unconjugated rabbit recombinant monoclonal antibody pair in PBS only storage buffer at a concentration of 1 mg/mL, ready for conjugation. Created using Proteintech's proprietary in-house recombinant technology. Recombinant production enables unrivalled batch-to-batch consistency, easy scale-up, and future security of supply.

Matched antibody pairs are designed for use in a variety of assays and platforms that require matched antibody pairs.

Antibody use should be optimized for each application and assay.

Storage

Storage:
Store at -80°C.
Storage buffer:
PBS only

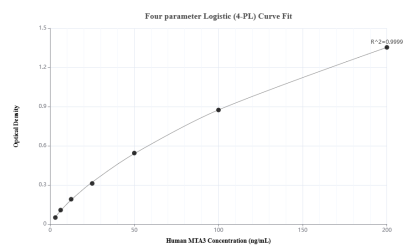
For technical support and original validation data for this product please contact:

T: 1 (888) 4PTGLAB (1-888-478-4522) (toll free in USA), or 1(312) 455-8498 (outside USA)

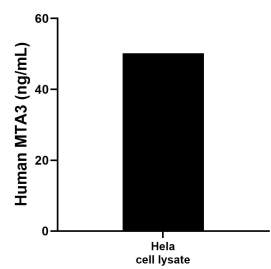
E: proteintech@ptglab.com
W: ptglab.com

This product is exclusively available under Proteintech Group brand and is not available to purchase from any other manufacturer.

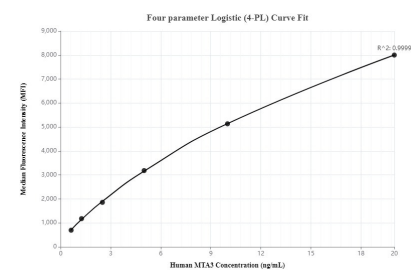
Selected Validation Data



Sandwich ELISA standard curve of MP00017-2, Human MTA3 Recombinant Matched Antibody Pair - PBS only. 83042-3-PBS was coated to a plate as the capture antibody and incubated with serial dilutions of standard Ag6400. 83042-1-PBS was HRP conjugated as the detection antibody. Range: 3.13-200 ng/mL



HeLa cell lysate was measured. The human MTA3 concentration of detected samples was determined to be 50.22 ng/mL (based on a 3.2 mg/mL extract load).



Cytometric bead array standard curve of MP00017-2, MTA3 Recombinant Matched Antibody Pair, PBS Only. Capture antibody: 83042-3-PBS. Detection antibody: 83042-1-PBS. Standard: Ag6400. Range: 0.625-20 ng/mL