

# SURF1 Recombinant Matched Antibody Pair, PBS Only

Catalog Number: **MP00034-4**

## Capture Antibody Information

**Catalog Number:**

83052-2-PBS

**Host:**

Rabbit

**Isotype:**

IgG

**Purification Method:**

Protein A purification

**Clone ID:**

230210D1

**Reactivity:**

human

**Immunogen Catalog Number:**

Ag3959

**Conjugate:**

Unconjugated

**Full name:**

surfeit 1

**Gene ID:**

6834

## Detection Antibody Information

**Catalog Number:**

83052-8-PBS

**Host:**

Rabbit

**Isotype:**

IgG

**Purification Method:**

Protein A purification

**Clone ID:**

230210H5

**Reactivity:**

human

**GenBank:**

BC028314

**Immunogen Catalog Number:**

Ag3959

**Conjugate:**

Unconjugated

**Full name:**

surfeit 1

**Gene ID:**

6834

## Applications

**Tested Applications:**

Sandwich ELISA

**Range:**

62.5-4000 pg/mL (Sandwich ELISA)

**Recommended Dilutions:**

It is recommended that this reagent should be titrated in each testing system to obtain optimal results.

## Product Information

MP00034-4 targets SURF1 in immunoassays as a matched antibody pair. Validated in Sandwich ELISA.

Capture antibody: SURF1 Recombinant antibody, PBS Only (Capture) 83052-2-PBS (230210D1). 100 µg. Concentration 1 mg/mL.

Detection antibody: SURF1 Recombinant antibody, PBS Only (Detector) 83052-8-PBS (230210H5). 100 µg. Concentration 1 mg/mL.

Unconjugated rabbit recombinant monoclonal antibody pair in PBS only storage buffer at a concentration of 1 mg/mL, ready for conjugation. Created using Proteintech's proprietary in-house recombinant technology. Recombinant production enables unrivalled batch-to-batch consistency, easy scale-up, and future security of supply.

Matched antibody pairs are designed for use in a variety of assays and platforms that require matched antibody pairs.

Antibody use should be optimized for each application and assay.

## Storage

**Storage:**

Store at -80°C.

**Storage buffer:**

PBS only

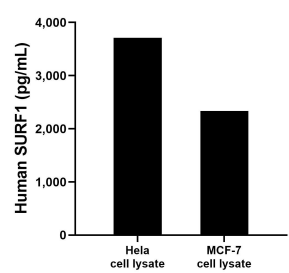
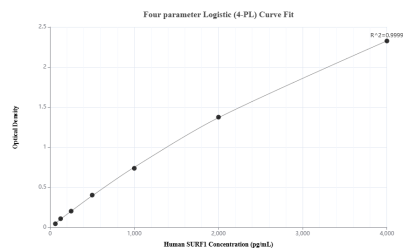
For technical support and original validation data for this product please contact:

T: 1 (888) 4PTGLAB (1-888-478-4522) (toll free in USA), or 1(312) 455-8498 (outside USA)

E: [proteintech@ptglab.com](mailto:proteintech@ptglab.com)  
W: [ptglab.com](http://ptglab.com)

**This product is exclusively available under Proteintech Group brand and is not available to purchase from any other manufacturer.**

## Selected Validation Data



Sandwich ELISA standard curve of MP00034-4, Human SURF1 Recombinant Matched Antibody Pair - PBS only. 83052-2-PBS was coated to a plate as the capture antibody and incubated with serial dilutions of standard Ag3959. 83052-8-PBS was HRP conjugated as the detection antibody. Range: 62.5-4000 pg/mL.

HeLa and MCF-7 cell lysates were measured. The human SURF1 concentration of detected samples was determined to be 3,709.4 pg/mL (based on a 6.4 mg/mL extract load) in HeLa cell lysate and 2,335.0 pg/mL (based on a 4.3 mg/mL extract load) in MCF-7 cell lysate.