

# PARP2 Recombinant Matched Antibody Pair, PBS Only

Catalog Number: **MP00045-4**

## Capture Antibody Information

**Catalog Number:**  
83071-5-PBS  
**Host:**  
Rabbit  
**Isotype:**  
IgG  
**Purification Method:**  
Protein A purification

**Clone ID:**  
230386C7  
**Reactivity:**  
human

**Conjugate:**  
Unconjugated  
**Full name:**  
poly (ADP-ribose) polymerase 2  
**Gene ID:**  
10038

## Detection Antibody Information

**Catalog Number:**  
83071-3-PBS  
**Host:**  
Rabbit  
**Isotype:**  
IgG  
**Purification Method:**  
Protein A purification

**Clone ID:**  
230386E12  
**Reactivity:**  
human  
**GenBank:**  
NM\_005484

**Conjugate:**  
Unconjugated  
**Full name:**  
poly (ADP-ribose) polymerase 2  
**Gene ID:**  
10038

## Applications

**Tested Applications:**  
Sandwich ELISA

**Range:**  
39.1-2500 pg/mL (Sandwich ELISA)

**Recommended Dilutions:**  
It is recommended that this reagent should be titrated in each testing system to obtain optimal results.

## Product Information

MP00045-4 targets PARP2 in immunoassays as a matched antibody pair. Validated in Sandwich ELISA.

Capture antibody: PARP2 Recombinant antibody, PBS Only (Capture) 83071-5-PBS (230386C7). 100 µg. Concentration 1 mg/mL.

Detection antibody: PARP2 Recombinant antibody, PBS Only (Detector) 83071-3-PBS (230386E12). 100 µg. Concentration 1 mg/mL.

Alternative PARP2 matched antibody pairs: MP00045-1, MP00045-2, MP00045-3

Unconjugated rabbit recombinant monoclonal antibody pair in PBS only storage buffer at a concentration of 1 mg/mL, ready for conjugation. Created using Proteintech's proprietary in-house recombinant technology. Recombinant production enables unrivalled batch-to-batch consistency, easy scale-up, and future security of supply.

Matched antibody pairs are designed for use in a variety of assays and platforms that require matched antibody pairs.

Antibody use should be optimized for each application and assay.

## Storage

**Storage:**  
Store at -80°C.  
**Storage buffer:**  
PBS only

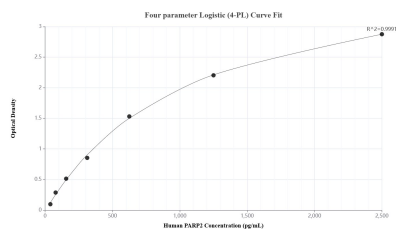
For technical support and original validation data for this product please contact:

T: 1 (888) 4PTGLAB (1-888-478-4522) (toll free in USA), or 1(312) 455-8498 (outside USA)

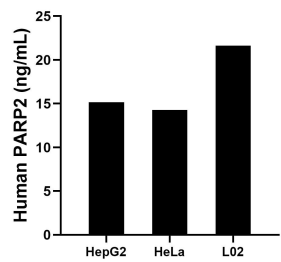
E: [proteintech@ptglab.com](mailto:proteintech@ptglab.com)  
W: [ptglab.com](http://ptglab.com)

**This product is exclusively available under Proteintech Group brand and is not available to purchase from any other manufacturer.**

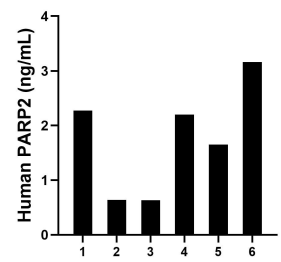
## Selected Validation Data



Sandwich ELISA standard curve of MP00045-4, Human PARP2 Recombinant Matched Antibody Pair - PBS only. 83071-5-PBS was coated to a plate as the capture antibody and incubated with serial dilutions of standard SY01205. 83071-3-PBS was HRP conjugated as the detection antibody. Range: 39.1-2500 pg/mL.



The mean PARP2 concentration was determined to be 15.2 ng/mL in HepG2 cell extract based on a 2.0 mg/mL extract load, 14.3 ng/mL in HeLa cell extract based on a 1.2 mg/mL extract load and 21.6 ng/mL in L02 cell extract based on a 1.3 mg/mL extract load.



Serum of six individual healthy human donors was measured. The PARP2 concentration of detected samples was determined to be 1.8 ng/mL with a range of 0.6-3.2 ng/mL.