

For Research Use Only

# CD61 / Integrin beta 3 Recombinant Matched Antibody Pair, PBS Only



Catalog Number:MP00047-3

## Capture Antibody Information

**Catalog Number:**  
83053-9-PBS  
**Host:**  
Rabbit  
**Isotype:**  
IgG  
**Purification Method:**  
Protein A purification

**Clone ID:**  
252741B10  
**Reactivity:**  
human  
**Immunogen Catalog Number:**  
Eg10480

**Conjugate:**  
Unconjugated  
**Full name:**  
integrin, beta 3 (platelet glycoprotein IIIa, antigen CD61)  
**Gene ID:**  
3690

## Detection Antibody Information

**Catalog Number:**  
83053-8-PBS  
**Host:**  
Rabbit  
**Isotype:**  
IgG  
**Purification Method:**  
Protein A purification

**Clone ID:**  
252741G6  
**Reactivity:**  
human  
**GenBank:**  
**Immunogen Catalog Number:**  
Eg10480

**Conjugate:**  
Unconjugated  
**Full name:**  
integrin, beta 3 (platelet glycoprotein IIIa, antigen CD61)  
**Gene ID:**  
3690

## Applications

**Tested Applications:**  
Sandwich ELISA

**Range:**  
31.25-2000 pg/mL (Sandwich ELISA)

**Recommended Dilutions:**  
It is recommended that this reagent should be titrated in each testing system to obtain optimal results.

## Product Information

MP00047-3 targets CD61 / Integrin beta 3 in immunoassays as a matched antibody pair. Validated in Sandwich ELISA.

Capture antibody: ITB3 Recombinant monoclonal antibody, PBS Only (Capture) 83053-9-PBS (252741B10). 100 µg. Concentration 1 mg/mL.

Detection antibody: ITB3 Recombinant monoclonal antibody, PBS Only (Detector) 83053-8-PBS (252741G6). 100 µg. Concentration 1 mg/mL.

Unconjugated rabbit recombinant monoclonal antibody pair in PBS only storage buffer at a concentration of 1 mg/mL, ready for conjugation. Created using Proteintech's proprietary in-house recombinant technology. Recombinant production enables unrivalled batch-to-batch consistency, easy scale-up, and future security of supply.

Matched antibody pairs are designed for use in a variety of assays and platforms that require matched antibody pairs.

Antibody use should be optimized for each application and assay.

## Storage

**Storage:**  
Store at -80°C.  
**Storage buffer:**  
PBS only

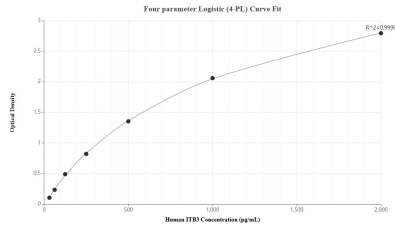
For technical support and original validation data for this product please contact:

T: 1 (888) 4PTGLAB (1-888-478-4522) (toll free in USA), or 1(312) 455-8498 (outside USA)

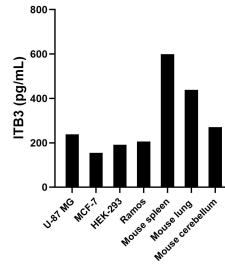
E: [proteintech@ptglab.com](mailto:proteintech@ptglab.com)  
W: [ptglab.com](http://ptglab.com)

**This product is exclusively available under Proteintech Group brand and is not available to purchase from any other manufacturer.**

## Selected Validation Data



Sandwich ELISA standard curve of MP00047-3, Human CD61 / Integrin beta 3 Recombinant Matched Antibody Pair - PBS only. 83053-9-PBS was coated to a plate as the capture antibody and incubated with serial dilutions of standard Eg10480. 83053-8-PBS was HRP conjugated as the detection antibody. Range: 31.25-2000 pg/mL



The mean CD61 / Integrin beta 3 concentration was determined to be 238.6 pg/mL in U-87 MG cell extract based on a 1.2 mg/mL extract load, 154.3 pg/mL in MCF-7 cell extract based on a 1.2 mg/mL extract load, 191.7 pg/mL in HEK-293 cell extract based on a 1.5 mg/mL extract load, 205.5 pg/mL in Ramos cell extract based on a 1.5 mg/mL extract load, 599.2 pg/mL in mouse spleen tissue extract based on a 7.6 mg/mL extract load, 438.0 pg/mL in mouse lung

