

# GPX4 Recombinant Matched Antibody Pair, PBS Only

Catalog Number: **MP00049-3**

## Capture Antibody Information

**Catalog Number:**  
82949-4-PBS  
**Host:**  
Rabbit  
**Isotype:**  
IgG  
**Purification Method:**  
Protein A purification

**Clone ID:**  
230168E11  
**Reactivity:**  
human  
**Immunogen Catalog Number:**  
Ag5809

**Conjugate:**  
Unconjugated  
**Full name:**  
glutathione peroxidase 4  
(phospholipid hydroperoxidase)  
**Gene ID:**  
2879

## Detection Antibody Information

**Catalog Number:**  
82949-1-PBS  
**Host:**  
Rabbit  
**Isotype:**  
IgG  
**Purification Method:**  
Protein A purification

**Clone ID:**  
230168A8  
**Reactivity:**  
human  
**GenBank:**  
BC022071  
**Immunogen Catalog Number:**  
Ag5809

**Conjugate:**  
Unconjugated  
**Full name:**  
glutathione peroxidase 4  
(phospholipid hydroperoxidase)  
**Gene ID:**  
2879

## Applications

**Tested Applications:**  
Cytometric bead array, Sandwich ELISA

**Range:**  
2.5-20 ng/mL (Cytometric Bead Array)  
1.56-100 ng/mL (Sandwich ELISA)

**Recommended Dilutions:**  
It is recommended that this reagent should be titrated in each testing system to obtain optimal results.

## Product Information

MP00049-3 targets GPX4 in immunoassays as a matched antibody pair. Validated in Cytometric bead array, Sandwich ELISA.

Capture antibody: GPX4 Recombinant antibody, PBS Only (Capture) 82949-4-PBS (230168E11). 100 µg. Concentration 1 mg/mL.

Detection antibody: GPX4 Recombinant antibody, PBS Only (Detector) 82949-1-PBS (230168A8). 100 µg. Concentration 1 mg/mL.

Alternative GPX4 matched antibody pairs: MP00049-1, MP00049-2, MP50524-1

Unconjugated rabbit recombinant monoclonal antibody pair in PBS only storage buffer at a concentration of 1 mg/mL, ready for conjugation. Created using Proteintech's proprietary in-house recombinant technology. Recombinant production enables unrivalled batch-to-batch consistency, easy scale-up, and future security of supply.

Matched antibody pairs are designed for use in a variety of assays and platforms that require matched antibody pairs.

Antibody use should be optimized for each application and assay.

## Storage

**Storage:**  
Store at -80°C.  
**Storage buffer:**  
PBS only

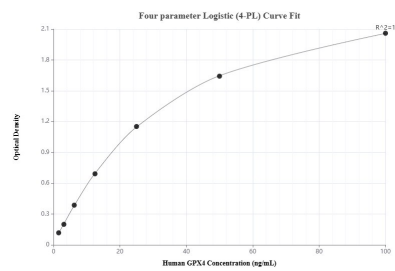
For technical support and original validation data for this product please contact:

T: 1 (888) 4PTGLAB (1-888-478-4522) (toll free in USA), or 1(312) 455-8498 (outside USA)

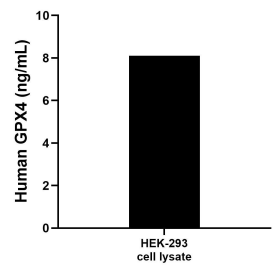
E: [proteintech@ptglab.com](mailto:proteintech@ptglab.com)  
W: [ptglab.com](http://ptglab.com)

**This product is exclusively available under Proteintech Group brand and is not available to purchase from any other manufacturer.**

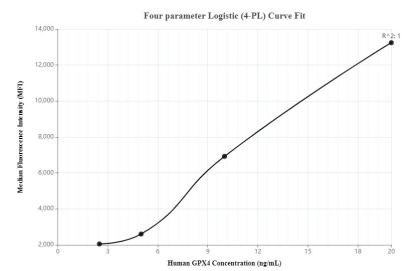
## Selected Validation Data



Sandwich ELISA standard curve of MP00049-3, Human GPX4 Recombinant Matched Antibody Pair - PBS only. 82949-4-PBS was coated to a plate as the capture antibody and incubated with serial dilutions of standard Ag5809. 82949-1-PBS was HRP conjugated as the detection antibody. Range: 1.56-100 ng/mL



HEK-293 cell lysate was measured. The human GPX4 concentration of detected samples was determined to be 8.1 ng/mL (based on a 1.2 mg/mL extract load).



Cytometric bead array standard curve of MP00049-3, GPX4 Recombinant Matched Antibody Pair, PBS Only. Capture antibody: 82949-4-PBS. Detection antibody: 82949-1-PBS. Standard: Ag5809. Range: 2.5-20 ng/mL