

MTAP Recombinant Matched Antibody Pair, PBS Only

Catalog Number: **MP00050-2**

Capture Antibody Information

Catalog Number:
83005-4-PBS
Host:
Rabbit
Isotype:
IgG
Purification Method:
Protein A purification

Clone ID:
240030E10
Reactivity:
human
Immunogen Catalog Number:
Ag2051

Conjugate:
Unconjugated
Full name:
methylthioadenosine phosphorylase
Gene ID:
4507

Detection Antibody Information

Catalog Number:
83005-3-PBS
Host:
Rabbit
Isotype:
IgG
Purification Method:
Protein A purification

Clone ID:
240030A11
Reactivity:
human
GenBank:
BC018625
Immunogen Catalog Number:
Ag2051

Conjugate:
Unconjugated
Full name:
methylthioadenosine phosphorylase
Gene ID:
4507

Applications

Tested Applications:
Cytometric bead array, Sandwich ELISA

Range:
0.625-20 ng/mL (Cytometric Bead Array)
0.3125-20ng/mL (Sandwich ELISA)

Recommended Dilutions:
It is recommended that this reagent should be titrated in each testing system to obtain optimal results.

Product Information

MP00050-2 targets MTAP in immunoassays as a matched antibody pair. Validated in Cytometric bead array, Sandwich ELISA.

Capture antibody: MTAP Recombinant antibody, PBS Only (Capture) 83005-4-PBS (240030E10). 100 µg. Concentration 1 mg/mL.

Detection antibody: MTAP Recombinant antibody, PBS Only (Detector) 83005-3-PBS (240030A11). 100 µg. Concentration 1 mg/mL.

Alternative MTAP matched antibody pairs: MP00050-1, MP00050-3

Unconjugated rabbit recombinant monoclonal antibody pair in PBS only storage buffer at a concentration of 1 mg/mL, ready for conjugation. Created using Proteintech's proprietary in-house recombinant technology. Recombinant production enables unrivalled batch-to-batch consistency, easy scale-up, and future security of supply.

Matched antibody pairs are designed for use in a variety of assays and platforms that require matched antibody pairs.

Antibody use should be optimized for each application and assay.

Storage

Storage:
Store at -80°C.
Storage buffer:
PBS only

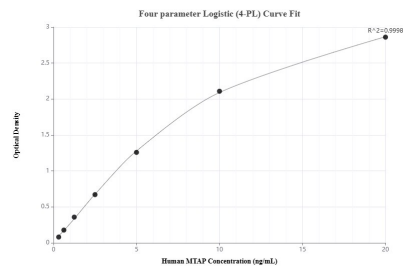
For technical support and original validation data for this product please contact:

T: 1 (888) 4PTGLAB (1-888-478-4522) (toll free in USA), or 1(312) 455-8498 (outside USA)

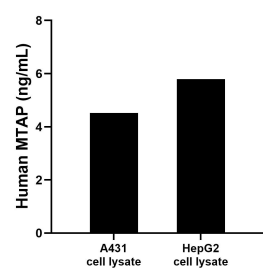
E: proteintech@ptglab.com
W: ptglab.com

This product is exclusively available under Proteintech Group brand and is not available to purchase from any other manufacturer.

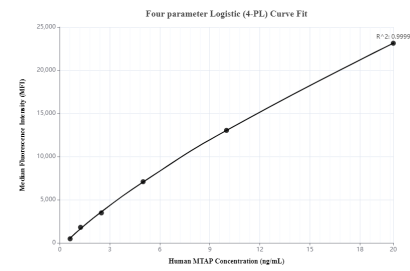
Selected Validation Data



Sandwich ELISA standard curve of MP00050-2, Human MTAP Recombinant Matched Antibody Pair - PBS only. 83005-4-PBS was coated to a plate as the capture antibody and incubated with serial dilutions of standard Ag2051. 83005-3-PBS was HRP conjugated as the detection antibody. Range: 0.3125-20ng/mL



A431 and HepG2 cell lysate were measured. The human MTAP concentration of detected samples was determined to be 4.52 ng/mL (based on a 1.5 mg/mL extract load) in A431 cell lysate and 5.80 ng/mL (based on a 1.2 mg/mL extract load) in HepG2 cell lysate.



Cytometric bead array standard curve of MP00050-2, MTAP Recombinant Matched Antibody Pair, PBS Only. Capture antibody: 83005-4-PBS. Detection antibody: 83005-3-PBS. Standard: Ag2051. Range: 0.625-20 ng/mL