

SLC7A10 Recombinant Matched Antibody Pair, PBS Only

Catalog Number: **MP00053-2**

Capture Antibody Information

Catalog Number:
83072-1-PBS
Host:
Rabbit
Isotype:
IgG
Purification Method:
Protein A purification

Clone ID:
230400A12
Reactivity:
Human
Immunogen Catalog Number:
Ag34628

Conjugate:
Unconjugated
Full name:
solute carrier family 7, (neutral amino acid transporter, y⁺ system) member 10
Gene ID:
56301

Detection Antibody Information

Catalog Number:
83072-2-PBS
Host:
Rabbit
Isotype:
IgG
Purification Method:
Protein A purification

Clone ID:
230400C7
Reactivity:
Human
GenBank:
BC035627
Immunogen Catalog Number:
Ag34628

Conjugate:
Unconjugated
Full name:
solute carrier family 7, (neutral amino acid transporter, y⁺ system) member 10
Gene ID:
56301

Applications

Tested Applications:
Cytometric bead array

Range:
0.625-20 ng/mL (Cytometric Bead Array)

Recommended Dilutions:
It is recommended that this reagent should be titrated in each testing system to obtain optimal results.

Product Information

MP00053-2 targets SLC7A10 in immunoassays as a matched antibody pair. Validated in Cytometric bead array.

Capture antibody: SLC7A10 Recombinant antibody, PBS Only (Capture) 83072-1-PBS (230400A12). 100 µg. Concentration 1 mg/mL.

Detection antibody: SLC7A10 Recombinant antibody, PBS Only (Detector) 83072-2-PBS (230400C7). 100 µg. Concentration 1 mg/mL.

Alternative SLC7A10 matched antibody pairs: MP00053-1, MP00053-3

Unconjugated rabbit recombinant monoclonal antibody pair in PBS only (BSA and azide free) storage buffer at a concentration of 1 mg/mL, ready for conjugation. Created using Proteintech's proprietary in-house recombinant technology. Recombinant production enables unrivalled batch-to-batch consistency, easy scale-up, and future security of supply.

Matched antibody pairs are designed for use in a variety of assays and platforms that require matched antibody pairs.

Antibody use should be optimized for each application and assay.

Storage

Storage:
Store at -80°C.
Storage buffer:
PBS only

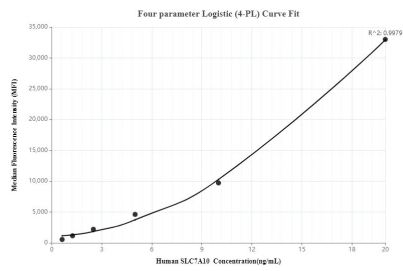
For technical support and original validation data for this product please contact:

T: 1 (888) 4PTGLAB (1-888-478-4522) (toll free in USA), or 1(312) 455-8498 (outside USA)

E: proteintech@ptglab.com
W: ptglab.com

This product is exclusively available under Proteintech Group brand and is not available to purchase from any other manufacturer.

Selected Validation Data



Cytometric bead array standard curve of MP00053-2, SLC7A10 Recombinant Matched Antibody Pair, PBS Only. Capture antibody: 83072-1-PBS. Detection antibody: 83072-2-PBS. Standard: Ag34628. Range: 0.625-20 ng/mL.