

# SLC4A9 Recombinant Matched Antibody Pair, PBS Only

Catalog Number: MP00073-1

## Capture Antibody Information

**Catalog Number:**  
83076-2-PBS  
**Host:**  
Rabbit  
**Isotype:**  
IgG  
**Purification Method:**  
Protein A purification

**Clone ID:**  
230419D8  
**Reactivity:**  
Human  
**Immunogen Catalog Number:**  
Ag34492

**Conjugate:**  
Unconjugated  
**Full name:**  
solute carrier family 4, sodium bicarbonate cotransporter, member 9  
**Gene ID:**  
83697

## Detection Antibody Information

**Catalog Number:**  
83076-3-PBS  
**Host:**  
Rabbit  
**Isotype:**  
IgG  
**Purification Method:**  
Protein A purification

**Clone ID:**  
230419H5  
**Reactivity:**  
Human  
**GenBank:**  
NM\_001258428  
**Immunogen Catalog Number:**  
Ag34492

**Conjugate:**  
Unconjugated  
**Full name:**  
solute carrier family 4, sodium bicarbonate cotransporter, member 9  
**Gene ID:**  
83697

## Applications

**Tested Applications:**  
Cytometric bead array

**Range:**  
0.625-20 ng/mL (Cytometric Bead Array)

**Recommended Dilutions:**  
It is recommended that this reagent should be titrated in each testing system to obtain optimal results.

## Product Information

MP00073-1 targets SLC4A9 in immunoassays as a matched antibody pair. Validated in Cytometric bead array.

Capture antibody: SLC4A9 Recombinant antibody, PBS Only (Capture) 83076-2-PBS (230419D8). 100 µg. Concentration 1 mg/mL.

Detection antibody: SLC4A9 Recombinant antibody, PBS Only (Capture/Detector) 83076-3-PBS (230419H5). 100 µg. Concentration 1 mg/mL.

Alternative SLC4A9 matched antibody pairs: MP00073-2

Unconjugated rabbit recombinant monoclonal antibody pair in PBS only (BSA and azide free) storage buffer at a concentration of 1 mg/mL, ready for conjugation. Created using Proteintech's proprietary in-house recombinant technology. Recombinant production enables unrivalled batch-to-batch consistency, easy scale-up, and future security of supply.

Matched antibody pairs are designed for use in a variety of assays and platforms that require matched antibody pairs.

Antibody use should be optimized for each application and assay.

## Storage

**Storage:**  
Store at -80°C.  
**Storage buffer:**  
PBS only

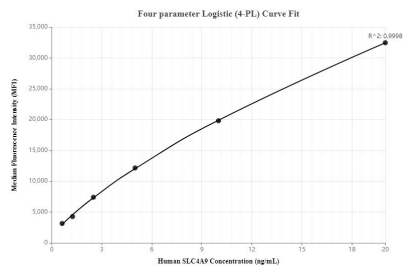
For technical support and original validation data for this product please contact:

T: 1 (888) 4PTGLAB (1-888-478-4522) (toll free in USA), or 1(312) 455-8498 (outside USA)

E: [proteintech@ptglab.com](mailto:proteintech@ptglab.com)  
W: [ptglab.com](http://ptglab.com)

This product is exclusively available under Proteintech Group brand and is not available to purchase from any other manufacturer.

# Selected Validation Data



Cytometric bead array standard curve of MP00073-1, SLC4A9 Recombinant Matched Antibody Pair, PBS Only. Capture antibody: 83076-2-PBS. Detection antibody: 83076-3-PBS. Standard: Ag34492. Range: 0.625-20 ng/mL