

MMP3 Recombinant Matched Antibody Pair, PBS Only

Catalog Number:MP00083-2

Capture Antibody Information

Catalog Number:
82984-3-PBS

Host:
Rabbit

Isotype:
IgG

Purification Method:
Protein A purification

Clone ID:
230535E1

Reactivity:
human

Conjugate:
Unconjugated

Full name:
matrix metalloproteinase 3
(stromelysin 1, progelatinase)

Gene ID:
4314

Detection Antibody Information

Catalog Number:
82984-2-PBS

Host:
Rabbit

Isotype:
IgG

Purification Method:
Protein A purification

Clone ID:
230535B6

Reactivity:
human

GenBank:
BC074815

Conjugate:
Unconjugated

Full name:
matrix metalloproteinase 3
(stromelysin 1, progelatinase)

Gene ID:
4314

Applications

Tested Applications:

Cytometric bead array, Sandwich
ELISA

Range:

0.625-20 ng/mL (Cytometric Bead
Array)
0.156-10 ng/mL (Sandwich ELISA)

Recommended Dilutions:

It is recommended that this reagent
should be titrated in each testing
system to obtain optimal results.

Product Information

MP00083-2 targets MMP3 in immunoassays as a matched antibody pair. Validated in Cytometric bead array, Sandwich ELISA.

Capture antibody: MMP3 Recombinant antibody, PBS Only (Capture) 82984-3-PBS (230535E1). 100 µg. Concentration 1 mg/mL.

Detection antibody: MMP3 Recombinant antibody, PBS Only (Detector) 82984-2-PBS (230535B6). 100 µg. Concentration 1 mg/mL.

Alternative MMP3 matched antibody pairs: MP00083-1, MP00083-3, MP50277-1, MP50277-2

Unconjugated rabbit recombinant monoclonal antibody pair in PBS only storage buffer at a concentration of 1 mg/mL, ready for conjugation. Created using Proteintech's proprietary in-house recombinant technology. Recombinant production enables unrivalled batch-to-batch consistency, easy scale-up, and future security of supply.

Matched antibody pairs are designed for use in a variety of assays and platforms that require matched antibody pairs.

Antibody use should be optimized for each application and assay.

Storage

Storage:

Store at -80°C.

Storage buffer:
PBS only

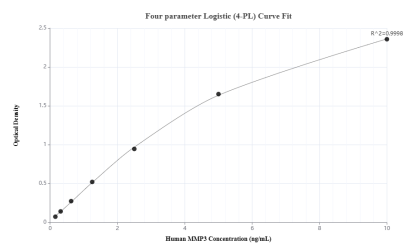
For technical support and original validation data for this product please contact:

T: 1 (888) 4PTGLAB (1-888-478-4522) (toll free
in USA), or 1(312) 455-8498 (outside USA)

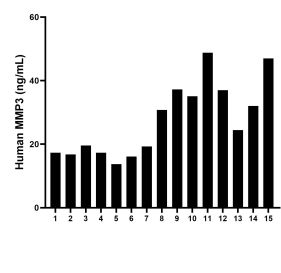
E: proteintech@ptglab.com
W: ptglab.com

This product is exclusively available under Proteintech Group brand and is not available to purchase from any other manufacturer.

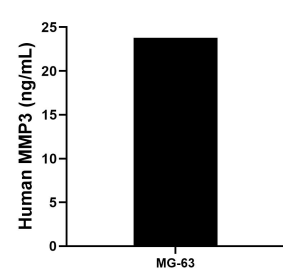
Selected Validation Data



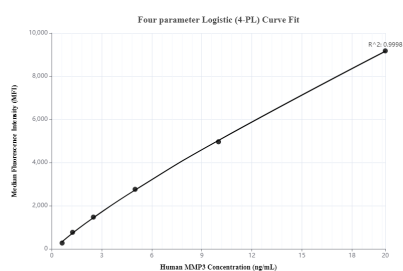
Sandwich ELISA standard curve of MP00083-2, Human MMP3 Recombinant Matched Antibody Pair - PBS only. 82984-3-PBS was coated to a plate as the capture antibody and incubated with serial dilutions of standard:Eg0382.82984-2-PBS was HRP conjugated as the detection antibody. Range: 0.156-10 ng/mL.



Serum of fifteen individual healthy human donors was measured. The human MMP3 concentration of detected samples was determined to be 27.50 ng/mL with a range of 13.74 - 48.76 ng/mL.



MG-63 were cultured in DMEM supplemented with 10% fetal bovine serum, 2.5 mM L-glutamine, 100 U/mL penicillin, and 100 µg/mL streptomycin sulfate. An aliquot of the cell culture supernate was removed, assayed for human MMP3, and measured 23.78 ng/mL.



Cytometric bead array standard curve ofMP00083-2, MMP3 Recombinant Matched Antibody Pair, PBS Only. Capture antibody: 82984-3-PBS. Detection antibody: 82984-2-PBS. Standard: Eg0382. Range: 0.625-20 ng/mL.