

Endoglin/CD105 Recombinant Matched Antibody Pair, PBS Only

Catalog Number: **MP00089-2**

Capture Antibody Information

Catalog Number:
82993-4-PBS
Host:
Rabbit
Isotype:
IgG
Purification Method:
Protein A purification

Clone ID:
230047H5
Reactivity:
human

Conjugate:
Unconjugated
Full name:
endoglin
Gene ID:
2022

Detection Antibody Information

Catalog Number:
82993-3-PBS
Host:
Rabbit
Isotype:
IgG
Purification Method:
Protein A purification

Clone ID:
230047C7
Reactivity:
human
GenBank:
BC014271

Conjugate:
Unconjugated
Full name:
endoglin
Gene ID:
2022

Applications

Tested Applications:
Cytometric bead array, Sandwich
ELISA

Range:
2.5-20 ng/mL (Cytometric Bead Array)
0.156-10 ng/mL (Sandwich ELISA)

Recommended Dilutions:
It is recommended that this reagent
should be titrated in each testing
system to obtain optimal results.

Product Information

MP00089-2 targets Endoglin/CD105 in immunoassays as a matched antibody pair. Validated in Cytometric bead array, Sandwich ELISA.

Capture antibody: Endoglin/CD105 Recombinant antibody, PBS Only (Capture) 82993-4-PBS (230047H5). 100 µg. Concentration 1 mg/mL.

Detection antibody: Endoglin/CD105 Recombinant antibody, PBS Only (Detector) 82993-3-PBS (230047C7). 100 µg. Concentration 1 mg/mL.

Unconjugated rabbit recombinant monoclonal antibody pair in PBS only storage buffer at a concentration of 1 mg/mL, ready for conjugation. Created using Proteintech's proprietary in-house recombinant technology. Recombinant production enables unrivalled batch-to-batch consistency, easy scale-up, and future security of supply.

Matched antibody pairs are designed for use in a variety of assays and platforms that require matched antibody pairs.

Antibody use should be optimized for each application and assay.

Storage

Storage:
Store at -80°C.
Storage buffer:
PBS only

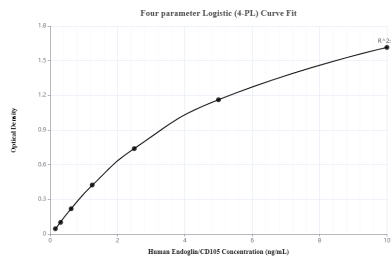
For technical support and original validation data for this product please contact:

T: 1 (888) 4PTGLAB (1-888-478-4522) (toll free
in USA), or 1(312) 455-8498 (outside USA)

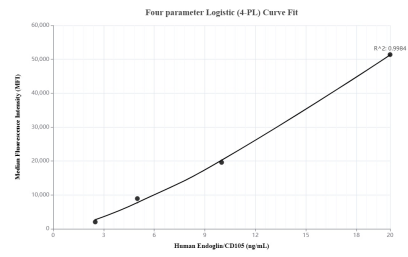
E: proteintech@ptglab.com
W: ptglab.com

**This product is exclusively available under Proteintech
Group brand and is not available to purchase from any
other manufacturer.**

Selected Validation Data



Sandwich ELISA standard curve of MP00089-2, Endoglin/CD105 Recombinant Matched Antibody Pair, PBS Only. Capture antibody: 82993-4-PBS. Detection antibody: 82993-3-PBS. Standard: Eg0587. Range: 0.156-10 ng/mL



Cytometric bead array standard curve of MP00089-2, Endoglin/CD105 Recombinant Matched Antibody Pair, PBS Only. Capture antibody: 82993-4-PBS. Detection antibody: 82993-3-PBS. Standard: Eg0587. Range: 2.5-20 ng/mL