

# G3BP2 Recombinant Matched Antibody Pair, PBS Only

Catalog Number: **MP00090-3**

## Capture Antibody Information

**Catalog Number:**  
82080-4-PBS  
**Host:**  
Rabbit  
**Isotype:**  
IgG  
**Purification Method:**  
Protein A purification

**Clone ID:**  
230275D6  
**Reactivity:**  
human  
**Immunogen Catalog Number:**  
Ag9355

**Conjugate:**  
Unconjugated  
**Full name:**  
GTPase activating protein (SH3 domain) binding protein 2  
**Gene ID:**  
9908

## Detection Antibody Information

**Catalog Number:**  
82080-2-PBS  
**Host:**  
Rabbit  
**Isotype:**  
IgG  
**Purification Method:**  
Protein A purification

**Clone ID:**  
230275B2  
**Reactivity:**  
human  
**GenBank:**  
BC011731  
**Immunogen Catalog Number:**  
Ag9355

**Conjugate:**  
Unconjugated  
**Full name:**  
GTPase activating protein (SH3 domain) binding protein 2  
**Gene ID:**  
9908

## Applications

**Tested Applications:**  
Cytometric bead array, Sandwich ELISA

**Range:**  
0.625-20 ng/mL (Cytometric Bead Array)  
0.625-40 ng/mL (Sandwich ELISA)

**Recommended Dilutions:**  
It is recommended that this reagent should be titrated in each testing system to obtain optimal results.

## Product Information

MP00090-3 targets G3BP2 in immunoassays as a matched antibody pair. Validated in Cytometric bead array, Sandwich ELISA.

Capture antibody: G3BP2 Recombinant antibody, PBS Only (Capture) 82080-4-PBS (230275D6). 100 µg. Concentration 1 mg/mL.

Detection antibody: G3BP2 Recombinant antibody, PBS Only (Detector) 82080-2-PBS (230275B2). 100 µg. Concentration 1 mg/mL.

Alternative G3BP2 matched antibody pairs: MP00090-1, MP00090-2

Unconjugated rabbit recombinant monoclonal antibody pair in PBS only storage buffer at a concentration of 1 mg/mL, ready for conjugation. Created using Proteintech's proprietary in-house recombinant technology. Recombinant production enables unrivalled batch-to-batch consistency, easy scale-up, and future security of supply.

Matched antibody pairs are designed for use in a variety of assays and platforms that require matched antibody pairs.

Antibody use should be optimized for each application and assay.

## Storage

**Storage:**  
Store at -80°C.  
**Storage buffer:**  
PBS only

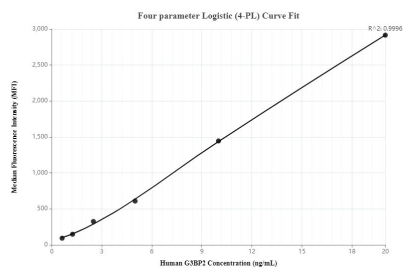
For technical support and original validation data for this product please contact:

T: 1 (888) 4PTGLAB (1-888-478-4522) (toll free in USA), or 1(312) 455-8498 (outside USA)

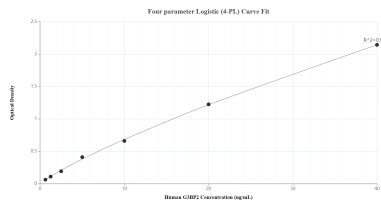
E: [proteintech@ptglab.com](mailto:proteintech@ptglab.com)  
W: [ptglab.com](http://ptglab.com)

**This product is exclusively available under Proteintech Group brand and is not available to purchase from any other manufacturer.**

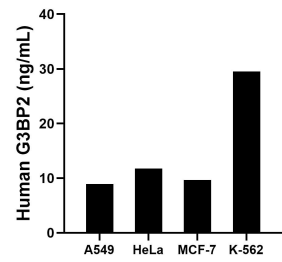
## Selected Validation Data



Cytometric bead array standard curve of MP00090-3, G3BP2 Recombinant Matched Antibody Pair, PBS Only. Capture antibody: 82080-4-PBS. Detection antibody: 82080-2-PBS. Standard: Ag9355. Range: 0.625-20 ng/mL



Sandwich ELISA standard curve of MP00090-3, Human G3BP2 Recombinant Matched Antibody Pair - PBS only. 82080-4-PBS was coated to a plate as the capture antibody and incubated with serial dilutions of standard Ag9355. 82080-2-PBS was HRP conjugated as the detection antibody. Range: 0.625-40 ng/mL



The mean G3BP2 concentration was determined to be 8.91 ng/mL in A549 cell extract based on a 2.20 mg/mL extract load, 11.75 ng/mL in HeLa cell extract based on a 3.20 mg/mL extract load, 9.66 ng/mL in MCF-7 cell extract based on a 4.30 mg/mL extract load and 29.51 ng/mL in K-562 cell extract based on a 4.50 mg/mL extract load.