

FDFT1 Recombinant Matched Antibody Pair, PBS Only

Catalog Number: MP00097-1

Capture Antibody Information

Catalog Number:
83020-2-PBS
Host:
Rabbit
Isotype:
IgG
Purification Method:
Protein A purification

Clone ID:
230362F3
Reactivity:
human
Immunogen Catalog Number:
Ag3743

Conjugate:
Unconjugated
Full name:
farnesyl-diphosphate
farnesyltransferase 1
Gene ID:
2222

Detection Antibody Information

Catalog Number:
83020-4-PBS
Host:
Rabbit
Isotype:
IgG
Purification Method:
Protein A purification

Clone ID:
230362F12
Reactivity:
human
GenBank:
BC029641
Immunogen Catalog Number:
Ag3743

Conjugate:
Unconjugated
Full name:
farnesyl-diphosphate
farnesyltransferase 1
Gene ID:
2222

Applications

Tested Applications:
Cytometric bead array, Sandwich
ELISA

Range:
0.625-20 ng/mL (Cytometric Bead
Array)
0.313-20 ng/mL (Sandwich ELISA)

Recommended Dilutions:
It is recommended that this reagent
should be titrated in each testing
system to obtain optimal results.

Product Information

MP00097-1 targets FDFT1 in immunoassays as a matched antibody pair. Validated in Cytometric bead array, Sandwich ELISA.

Capture antibody: FDFT1 Recombinant antibody, PBS Only (Capture/Detector) 83020-2-PBS (230362F3). 100 µg. Concentration 1 mg/mL.

Detection antibody: FDFT1 Recombinant antibody, PBS Only (Detector) 83020-4-PBS (230362F12). 100 µg. Concentration 1 mg/mL.

Alternative FDFT1 matched antibody pairs: MP00097-2, MP00097-3

Unconjugated rabbit recombinant monoclonal antibody pair in PBS only storage buffer at a concentration of 1 mg/mL, ready for conjugation. Created using Proteintech's proprietary in-house recombinant technology. Recombinant production enables unrivalled batch-to-batch consistency, easy scale-up, and future security of supply.

Matched antibody pairs are designed for use in a variety of assays and platforms that require matched antibody pairs.

Antibody use should be optimized for each application and assay.

Storage

Storage:
Store at -80°C.
Storage buffer:
PBS only

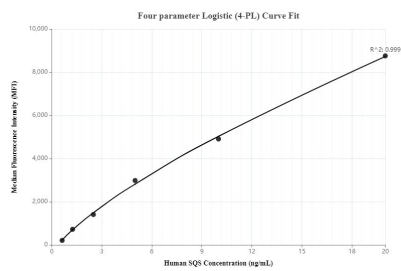
For technical support and original validation data for this product please contact:

T: 1 (888) 4PTGLAB (1-888-478-4522) (toll free
in USA), or 1(312) 455-8498 (outside USA)

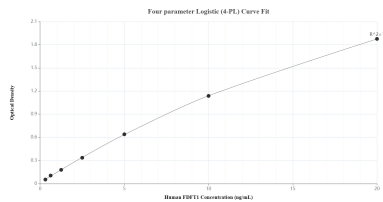
E: proteintech@ptglab.com
W: ptglab.com

This product is exclusively available under Proteintech Group brand and is not available to purchase from any other manufacturer.

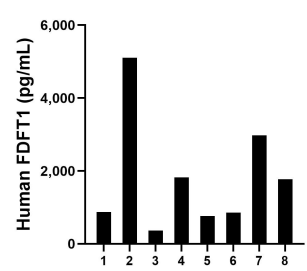
Selected Validation Data



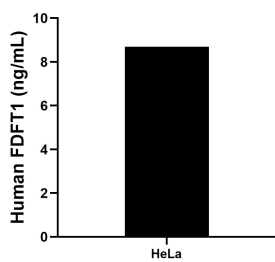
Cytometric bead array standard curve of MP00097-1, SQS/FDFT1 Recombinant Matched Antibody Pair, PBS Only. Capture antibody: 83020-2-PBS. Detection antibody: 83020-4-PBS. Standard: Ag3743. Range: 0.625-20 ng/mL



Sandwich ELISA standard curve of MP00097-1, Human FDFT1 Recombinant Matched Antibody Pair - PBS only. 83020-2-PBS was coated to a plate as the capture antibody and incubated with serial dilutions of standard Ag3743. 83020-4-PBS was HRP conjugated as the detection antibody. Range: 0.313-20 ng/mL



Serum of eight individual healthy human donors was measured. The FDFT1 concentration of detected samples was determined to be 1,817 pg/mL with a range of 368 - 5,103 pg/mL



The mean FDFT1 concentration was determined to be 8.7 ng/mL in HeLa cell extract based on a 1.5 mg/mL extract load.