

NLRP3 Recombinant Matched Antibody Pair, PBS Only

Catalog Number: **MP00101-4**

Capture Antibody Information

Catalog Number:
80422-2-PBS
Host:
Rabbit
Isotype:
IgG
Purification Method:
Protein A purification

Clone ID:
230052F12
Reactivity:
human
Immunogen Catalog Number:
Ag26289

Conjugate:
Unconjugated
Full name:
NLR family, pyrin domain containing 3
Gene ID:
114548

Detection Antibody Information

Catalog Number:
80422-5-PBS
Host:
Rabbit
Isotype:
IgG
Purification Method:
Protein A purification

Clone ID:
230052H5
Reactivity:
human
GenBank:
NM_001079821
Immunogen Catalog Number:
Ag26289

Conjugate:
Unconjugated
Full name:
NLR family, pyrin domain containing 3
Gene ID:
114548

Applications

Tested Applications:
Sandwich ELISA

Range:
78.1-5000 pg/mL (Sandwich ELISA)

Recommended Dilutions:
It is recommended that this reagent should be titrated in each testing system to obtain optimal results.

Product Information

MP00101-4 targets NLRP3 in immunoassays as a matched antibody pair. Validated in Sandwich ELISA.

Capture antibody: NLRP3 Recombinant antibody, PBS Only (Capture) 80422-2-PBS (230052F12). 100 µg. Concentration 1 mg/mL.

Detection antibody: NLRP3 Recombinant antibody, PBS Only (Detector) 80422-5-PBS (230052H5). 100 µg. Concentration 1 mg/mL.

Unconjugated rabbit recombinant monoclonal antibody pair in PBS only storage buffer at a concentration of 1 mg/mL, ready for conjugation. Created using Proteintech's proprietary in-house recombinant technology. Recombinant production enables unrivalled batch-to-batch consistency, easy scale-up, and future security of supply.

Matched antibody pairs are designed for use in a variety of assays and platforms that require matched antibody pairs.

Antibody use should be optimized for each application and assay.

Storage

Storage:
Store at -80°C.
Storage buffer:
PBS only

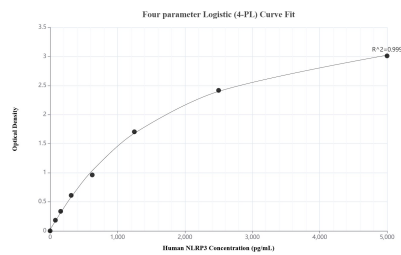
For technical support and original validation data for this product please contact:

T: 1 (888) 4PTGLAB (1-888-478-4522) (toll free in USA), or 1(312) 455-8498 (outside USA)

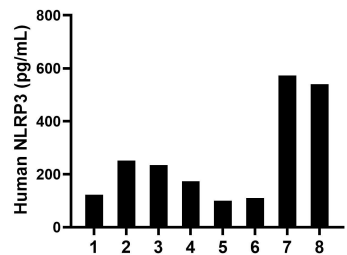
E: proteintech@ptglab.com
W: ptglab.com

This product is exclusively available under Proteintech Group brand and is not available to purchase from any other manufacturer.

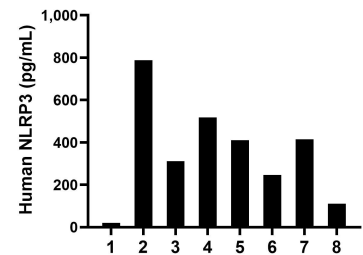
Selected Validation Data



Sandwich ELISA standard curve of MP00101-4, Human NLRP3 Recombinant Matched Antibody Pair - PBS only. 80422-2-PBS was coated to a plate as the capture antibody and incubated with serial dilutions of standard Ag26289. 80422-5-PBS was HRP conjugated as the detection antibody. Range: 78.1-5000 pg/mL.



Serum of eight individual healthy human donors was measured. The NLRP3 concentration of detected samples was determined to be 263.1 pg/mL with a range of 100.1-572.7 pg/mL.



Saliva of eight individual healthy human donors was measured. The NLRP3 concentration of detected samples was determined to be 448.1 pg/mL with a range of 246.0-787.7 pg/mL.