

For Research Use Only



# Claudin 18 Recombinant Matched Antibody Pair, PBS Only

Catalog Number:MP00105-3

## Capture Antibody Information

Catalog Number:  
83028-4-PBS

Host:  
Rabbit

Isotype:  
IgG

Purification Method:  
Protein A purification

Clone ID:  
230198F8

Reactivity:  
human

Immunogen Catalog Number:  
Ag34049

Conjugate:  
Unconjugated

Full name:  
claudin 18

Gene ID:  
51208

## Detection Antibody Information

Catalog Number:  
83028-5-PBS

Host:  
Rabbit

Isotype:  
IgG

Purification Method:  
Protein A purification

Clone ID:  
230198H1

Reactivity:  
human

GenBank:  
NM\_001002026

Immunogen Catalog Number:  
Ag34049

Conjugate:  
Unconjugated

Full name:  
claudin 18

Gene ID:  
51208

## Applications

Tested Applications:  
Sandwich ELISA

Range:  
93.8-6000 pg/mL (Sandwich ELISA)

Recommended Dilutions:  
It is recommended that this reagent should be titrated in each testing system to obtain optimal results.

## Product Information

MP00105-3 targets Claudin 18 in immunoassays as a matched antibody pair. Validated in Sandwich ELISA.

Capture antibody: CLDN18 Recombinant antibody, PBS Only (Capture) 83028-4-PBS (230198F8). 100 µg. Concentration 1 mg/mL.

Detection antibody: CLDN18 Recombinant antibody, PBS Only (Detector) 83028-5-PBS (230198H1). 100 µg. Concentration 1 mg/mL.

Unconjugated rabbit recombinant monoclonal antibody pair in PBS only storage buffer at a concentration of 1 mg/mL, ready for conjugation. Created using Proteintech's proprietary in-house recombinant technology. Recombinant production enables unrivalled batch-to-batch consistency, easy scale-up, and future security of supply.

Matched antibody pairs are designed for use in a variety of assays and platforms that require matched antibody pairs.

Antibody use should be optimized for each application and assay.

## Storage

Storage:  
Store at -80°C.  
Storage buffer:  
PBS only

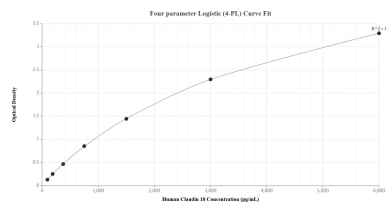
For technical support and original validation data for this product please contact:

T: 1 (888) 4PTGLAB (1-888-478-4522) (toll free in USA), or 1(312) 455-8498 (outside USA)

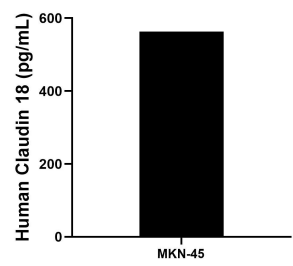
E: [proteintech@ptglab.com](mailto:proteintech@ptglab.com)  
W: [ptglab.com](http://ptglab.com)

This product is exclusively available under Proteintech Group brand and is not available to purchase from any other manufacturer.

## Selected Validation Data



Sandwich ELISA standard curve of MP00105-3, Human Claudin 18 Recombinant Matched Antibody Pair - PBS only. 83028-4-PBS was coated to a plate as the capture antibody and incubated with serial dilutions of standard Ag34049. 83028-5-PBS was HRP conjugated as the detection antibody. Range: 93.8-6000 pg/mL.



The mean Claudin 18 concentration was determined to be 563.0 pg/mL in MKN-45 cell extract based on a 4.8 mg/mL extract load.