

CCR5 Recombinant Matched Antibody Pair, PBS Only

Catalog Number: **MP00125-4**

Capture Antibody Information

Catalog Number:

82942-2-PBS

Host:

Rabbit

Isotype:

IgG

Purification Method:

Protein A purification

Clone ID:

230266A9

Reactivity:

human

Immunogen Catalog Number:

Ag11493

Conjugate:

Unconjugated

Full name:

chemokine (C-C motif) receptor 5

Gene ID:

1234

Detection Antibody Information

Catalog Number:

82942-6-PBS

Host:

Rabbit

Isotype:

IgG

Purification Method:

Protein A purification

Clone ID:

230266E2

Reactivity:

human

GenBank:

BC038398

Immunogen Catalog Number:

Ag11493

Conjugate:

Unconjugated

Full name:

chemokine (C-C motif) receptor 5

Gene ID:

1234

Applications

Tested Applications:

Sandwich ELISA

Range:

0.625-40 ng/mL (Sandwich ELISA)

Recommended Dilutions:

It is recommended that this reagent should be titrated in each testing system to obtain optimal results.

Product Information

MP00125-4 targets CCR5 in immunoassays as a matched antibody pair. Validated in Sandwich ELISA.

Capture antibody: CCR5 Recombinant antibody, PBS Only (Capture) 82942-2-PBS (230266A9). 100 µg. Concentration 1 mg/mL.

Detection antibody: CCR5 Recombinant antibody, PBS Only (Detector) 82942-6-PBS (230266E2). 100 µg. Concentration 1 mg/mL.

Alternative CCR5 matched antibody pairs: MP00125-1, MP00125-2, MP00125-3

Unconjugated rabbit recombinant monoclonal antibody pair in PBS only storage buffer at a concentration of 1 mg/mL, ready for conjugation. Created using Proteintech's proprietary in-house recombinant technology. Recombinant production enables unrivalled batch-to-batch consistency, easy scale-up, and future security of supply.

Matched antibody pairs are designed for use in a variety of assays and platforms that require matched antibody pairs.

Antibody use should be optimized for each application and assay.

Storage

Storage:

Store at -80°C.

Storage buffer:

PBS only

For technical support and original validation data for this product please contact:

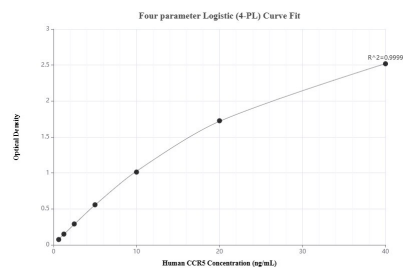
T: 1 (888) 4PTGLAB (1-888-478-4522) (toll free in USA), or 1(312) 455-8498 (outside USA)

E: proteintech@ptglab.com

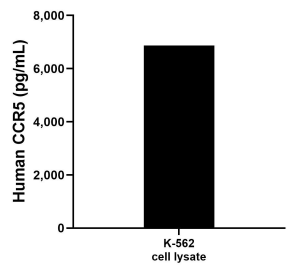
W: ptglab.com

This product is exclusively available under Proteintech Group brand and is not available to purchase from any other manufacturer.

Selected Validation Data



Sandwich ELISA standard curve of MP00125-4, Human CCR5 Recombinant Matched Antibody Pair - PBS only. 82942-2-PBS was coated to a plate as the capture antibody and incubated with serial dilutions of standard Ag11493. 82942-6-PBS was HRP conjugated as the detection antibody. Range: 0.625-40 ng/mL



K-562 cell lysate was measured. The human CCR5 concentration of detected samples was determined to be 6,872.7 pg/mL (based on a 2.1 mg/mL extract load) in K-562 cell lysate.