

MAX Recombinant Matched Antibody Pair, PBS Only

Catalog Number: MP00126-3

Capture Antibody Information

Catalog Number:
82958-5-PBSHost:
RabbitIsotype:
IgGPurification Method:
Protein A purificationClone ID:
230215G4Reactivity:
humanImmunogen Catalog Number:
Ag0680Conjugate:
UnconjugatedFull name:
MYC associated factor XGene ID:
4149

Detection Antibody Information

Catalog Number:
82958-3-PBSHost:
RabbitIsotype:
IgGPurification Method:
Protein A purificationClone ID:
230215C6Reactivity:
humanGenBank:
BC003525Immunogen Catalog Number:
Ag0680Conjugate:
UnconjugatedFull name:
MYC associated factor XGene ID:
4149

Affinity:
 $K_D = 2.32 \times 10^{-10} M$
 $K_{Off} = 8.10 \times 10^{-5} M$
 $K_{On} = 3.49 \times 10^5 M$

Applications

Tested Applications:

Cytometric bead array, Sandwich
ELISA

Range:

0.625–20 ng/mL (Cytometric Bead
Array)
0.195–12.5 ng/mL (Sandwich ELISA)

Recommended Dilutions:

It is recommended that this reagent
should be titrated in each testing
system to obtain optimal results.

Product Information

MP00126-3 targets MAX in immunoassays as a matched antibody pair. Validated in Cytometric bead array, Sandwich ELISA.

Capture antibody: MAX Recombinant antibody, PBS Only (Capture) 82958-5-PBS (230215G4). 100 µg. Concentration 1 mg/mL.

Detection antibody: MAX Recombinant antibody, PBS Only (Detector) 82958-3-PBS (230215C6). 100 µg. Concentration 1 mg/mL.

Alternative MAX matched antibody pairs: MP00126-1, MP00126-2

Unconjugated rabbit recombinant monoclonal antibody pair in PBS only storage buffer at a concentration of 1 mg/mL, ready for conjugation. Created using Proteintech's proprietary in-house recombinant technology. Recombinant production enables unrivalled batch-to-batch consistency, easy scale-up, and future security of supply.

Matched antibody pairs are designed for use in a variety of assays and platforms that require matched antibody pairs.

Antibody use should be optimized for each application and assay.

Storage

Storage:

Store at -80°C.

Storage buffer:

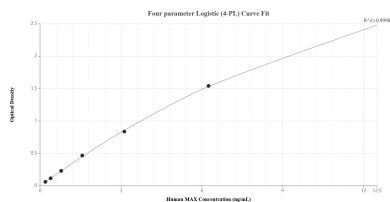
PBS only

For technical support and original validation data for this product please contact:

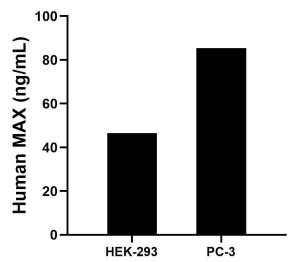
T: 1 (888) 4PTGLAB (1-888-478-4522) (toll free
in USA), or 1(312) 455-8498 (outside USA)E: proteintech@ptglab.com
W: ptglab.com

This product is exclusively available under Proteintech
Group brand and is not available to purchase from any
other manufacturer.

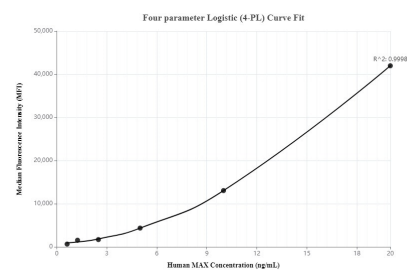
Selected Validation Data



Sandwich ELISA standard curve of MP00126-3, Human MAX Recombinant Matched Antibody Pair - PBS only. 82958-5-PBS was coated to a plate as the capture antibody and incubated with serial dilutions of standard Ag0680. 82958-3-PBS was HRP conjugated as the detection antibody. Range: 0.195-12.5 ng/mL.



The mean MAX concentration was determined to be 46.56 ng/mL in HEK-293 cell extract based on a 1.50 mg/mL extract load and 85.43 ng/mL in PC-3 cell extract based on a 1.30 mg/mL extract load.



Cytometric bead array standard curve of MP00126-3, MAX Recombinant Matched Antibody Pair - PBS only. Capture antibody: 82958-5-PBS. Detection antibody: 82958-3-PBS. Standard: Ag0680. Range: 0.625-20 ng/mL.