

For Research Use Only



COL15A1 Recombinant Matched Antibody Pair, PBS Only

Catalog Number:MP00133-4

Capture Antibody Information

Catalog Number:

83031-3-PBS

Host:

Rabbit

Isotype:

IgG

Purification Method:

Protein A purification

Clone ID:

230248F4

Reactivity:

human

Immunogen Catalog Number:

Ag34644

Conjugate:

Unconjugated

Full name:

collagen, type XV, alpha 1

Gene ID:

1306

Detection Antibody Information

Catalog Number:

83031-1-PBS

Host:

Rabbit

Isotype:

IgG

Purification Method:

Protein A purification

Clone ID:

230248A11

Reactivity:

human

GenBank:

BC157094

Immunogen Catalog Number:

Ag34644

Conjugate:

Unconjugated

Full name:

collagen, type XV, alpha 1

Gene ID:

1306

Applications

Tested Applications:

Sandwich ELISA

Range:

0.188-12 ng/mL (Sandwich ELISA)

Recommended Dilutions:

It is recommended that this reagent should be titrated in each testing system to obtain optimal results.

Product Information

MP00133-4 targets COL15A1 in immunoassays as a matched antibody pair. Validated in Sandwich ELISA.

Capture antibody: Collagen Type XV Recombinant antibody, PBS Only (Capture/Detector) 83031-3-PBS (230248F4). 100 µg. Concentration 1 mg/mL.

Detection antibody: Collagen Type XV Recombinant antibody, PBS Only (Capture/Detector) 83031-1-PBS (230248A11). 100 µg. Concentration 1 mg/mL.

Unconjugated rabbit recombinant monoclonal antibody pair in PBS only storage buffer at a concentration of 1 mg/mL, ready for conjugation. Created using Proteintech's proprietary in-house recombinant technology. Recombinant production enables unrivalled batch-to-batch consistency, easy scale-up, and future security of supply.

Matched antibody pairs are designed for use in a variety of assays and platforms that require matched antibody pairs.

Antibody use should be optimized for each application and assay.

Storage

Storage:

Store at -80°C.

Storage buffer:

PBS only

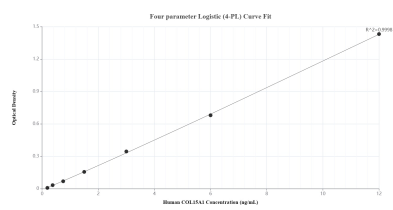
For technical support and original validation data for this product please contact:

T: 1 (888) 4PTGLAB (1-888-478-4522) (toll free in USA), or 1(312) 455-8498 (outside USA)

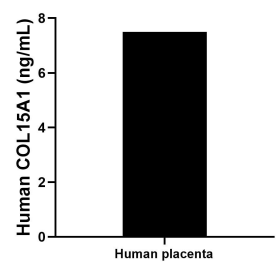
E: proteintech@ptglab.com
W: ptglab.com

This product is exclusively available under Proteintech Group brand and is not available to purchase from any other manufacturer.

Selected Validation Data



Sandwich ELISA standard curve of MP00133-4, Human COL15A1 Recombinant Matched Antibody Pair - PBS only. 83031-3-PBS was coated to a plate as the capture antibody and incubated with serial dilutions of standard Ag34644. 83031-1-PBS was HRP conjugated as the detection antibody. Range: 0.188-12 ng/mL.



The mean COL15A1 concentration was determined to be 7.50 ng/mL in human placenta extract based on a 2.40 mg/mL extract load.