

CD28 Recombinant Matched Antibody Pair, PBS Only

Catalog Number: **MP00136-5**

Capture Antibody Information

Catalog Number:
83383-8-PBS
Host:
Rabbit
Isotype:
IgG
Purification Method:
Protein A purification

Clone ID:
240353H8
Reactivity:
human

Conjugate:
Unconjugated
Full name:
CD28 molecule
Gene ID:
940

Detection Antibody Information

Catalog Number:
83383-2-PBS
Host:
Rabbit
Isotype:
IgG
Purification Method:
Protein A purification

Clone ID:
240353H7
Reactivity:
human
GenBank:
BC093698

Conjugate:
Unconjugated
Full name:
CD28 molecule
Gene ID:
940

Applications

Tested Applications:
Sandwich ELISA

Range:
78.125-5000 pg/mL (Sandwich ELISA)

Recommended Dilutions:
It is recommended that this reagent should be titrated in each testing system to obtain optimal results.

Product Information

MP00136-5 targets CD28 in immunoassays as a matched antibody pair. Validated in Sandwich ELISA.

Capture antibody: CD28 Recombinant antibody, PBS Only (Capture) 83383-8-PBS (240353H8). 100 µg. Concentration 1 mg/mL.

Detection antibody: CD28 Recombinant antibody, PBS Only (Detector) 83383-2-PBS (240353H7). 100 µg. Concentration 1 mg/mL.

Alternative CD28 matched antibody pairs: MP00136-1, MP00136-2, MP00136-3, MP00136-4, MP50331-1, MP50331-2

Unconjugated rabbit recombinant monoclonal antibody pair in PBS only storage buffer at a concentration of 1 mg/mL, ready for conjugation. Created using Proteintech's proprietary in-house recombinant technology. Recombinant production enables unrivalled batch-to-batch consistency, easy scale-up, and future security of supply.

Matched antibody pairs are designed for use in a variety of assays and platforms that require matched antibody pairs.

Antibody use should be optimized for each application and assay.

Storage

Storage:
Store at -80°C.
Storage buffer:
PBS only

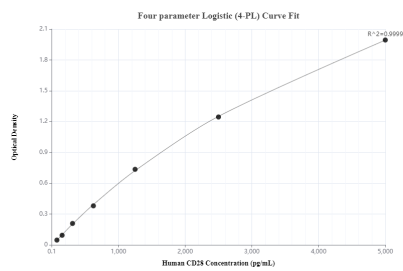
For technical support and original validation data for this product please contact:

T: 1 (888) 4PTGLAB (1-888-478-4522) (toll free in USA), or 1(312) 455-8498 (outside USA)

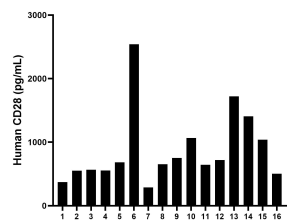
E: proteintech@ptglab.com
W: ptglab.com

This product is exclusively available under Proteintech Group brand and is not available to purchase from any other manufacturer.

Selected Validation Data



Sandwich ELISA standard curve of MP00136-5, Human CD28 Monoclonal Matched Antibody Pair - PBS only. 83383-8-PBS was coated to a plate as the capture antibody and incubated with serial dilutions of standard Eg0889. 83383-2-PBS was HRP conjugated as the detection antibody. Range: 78.125-5000 pg/mL



Serum of sixteen individual healthy human donors were measured. The human CD28 concentration of detected samples was determined to be 879.1 pg/mL with a range of 287.8 - 2,540.7 pg/mL