

STX1A Recombinant Matched Antibody Pair, PBS Only

Catalog Number: **MP00172-4**

Capture Antibody Information

Catalog Number:
83159-1-PBS
Host:
Rabbit
Isotype:
IgG
Purification Method:
Protein A purification

Clone ID:
240018A2
Reactivity:
human

Conjugate:
Unconjugated
Full name:
syntaxin 1A (brain)
Gene ID:
6804

Detection Antibody Information

Catalog Number:
83159-3-PBS
Host:
Rabbit
Isotype:
IgG
Purification Method:
Protein A purification

Clone ID:
240018D9
Reactivity:
human
GenBank:
NM_004603

Conjugate:
Unconjugated
Full name:
syntaxin 1A (brain)
Gene ID:
6804

Applications

Tested Applications:
Sandwich ELISA

Range:
7.8-500 pg/mL (Sandwich ELISA)

Recommended Dilutions:
It is recommended that this reagent should be titrated in each testing system to obtain optimal results.

Product Information

MP00172-4 targets STX1A in immunoassays as a matched antibody pair. Validated in Sandwich ELISA.

Capture antibody: STX1A Recombinant antibody, PBS Only (Capture/Detector) 83159-1-PBS (240018A2). 100 µg. Concentration 1 mg/mL.

Detection antibody: STX1A Recombinant antibody, PBS Only (Capture/Detector) 83159-3-PBS (240018D9). 100 µg. Concentration 1 mg/mL.

Unconjugated rabbit recombinant monoclonal antibody pair in PBS only storage buffer at a concentration of 1 mg/mL, ready for conjugation. Created using Proteintech's proprietary in-house recombinant technology. Recombinant production enables unrivalled batch-to-batch consistency, easy scale-up, and future security of supply.

Matched antibody pairs are designed for use in a variety of assays and platforms that require matched antibody pairs.

Antibody use should be optimized for each application and assay.

Storage

Storage:
Store at -80°C.
Storage buffer:
PBS only

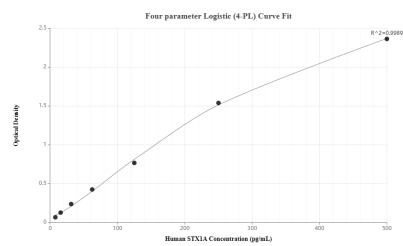
For technical support and original validation data for this product please contact:

T: 1 (888) 4PTGLAB (1-888-478-4522) (toll free in USA), or 1(312) 455-8498 (outside USA)

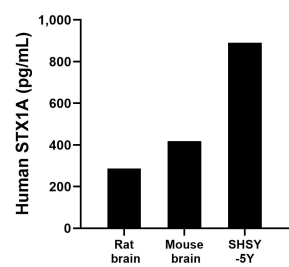
E: proteintech@ptglab.com
W: ptglab.com

This product is exclusively available under Proteintech Group brand and is not available to purchase from any other manufacturer.

Selected Validation Data



Sandwich ELISA standard curve of MP00172-4, Human STX1A Monoclonal Matched Antibody Pair - PBS only. 83159-1-PBS was coated to a plate as the capture antibody and incubated with serial dilutions of standard SY01214. 83159-3-PBS was HRP conjugated as the detection antibody. Range: 7.8-500 pg/mL.



The mean human STX1A concentration was determined to be 287.3 pg/mL in rat brain extract based on a 3 mg/mL extract load, 418.7 pg/mL in mouse brain extract based on a 2 mg/mL extract load and 890.3 pg/mL in SHSY-5Y cell extract based on a 3 mg/mL extract load.