

CPD Recombinant Matched Antibody Pair, PBS Only

Catalog Number:MP00185-1

Capture Antibody Information

Catalog Number:
83229-3-PBSHost:
RabbitIsotype:
IgGPurification Method:
Protein A purificationClone ID:
240196G11Reactivity:
humanImmunogen Catalog Number:
Ag34646Conjugate:
UnconjugatedFull name:
carboxypeptidase DGene ID:
1362

Detection Antibody Information

Catalog Number:
83229-1-PBSHost:
RabbitIsotype:
IgGPurification Method:
Protein A purificationClone ID:
240196A3Reactivity:
humanGenBank:
NM_001304Immunogen Catalog Number:
Ag34646Conjugate:
UnconjugatedFull name:
carboxypeptidase DGene ID:
1362

Applications

Tested Applications:

Cytometric bead array, Sandwich
ELISA

Range:

0.625-20 ng/mL (Cytometric Bead
Array)
0.625-40 ng/mL (Sandwich ELISA)

Recommended Dilutions:

It is recommended that this reagent
should be titrated in each testing
system to obtain optimal results.

Product Information

MP00185-1 targets CPD in immunoassays as a matched antibody pair. Validated in Cytometric bead array, Sandwich ELISA.

Capture antibody: CPD Recombinant antibody, PBS Only (Capture/Detector) 83229-3-PBS (240196G11). 100 µg. Concentration 1 mg/mL.

Detection antibody: CPD Recombinant antibody, PBS Only (Detector) 83229-1-PBS (240196A3). 100 µg. Concentration 1 mg/mL.

Alternative CPD matched antibody pairs: MP00185-2

Unconjugated rabbit recombinant monoclonal antibody pair in PBS only storage buffer at a concentration of 1 mg/mL, ready for conjugation. Created using Proteintech's proprietary in-house recombinant technology. Recombinant production enables unrivalled batch-to-batch consistency, easy scale-up, and future security of supply.

Matched antibody pairs are designed for use in a variety of assays and platforms that require matched antibody pairs.

Antibody use should be optimized for each application and assay.

Storage

Storage:

Store at -80°C.

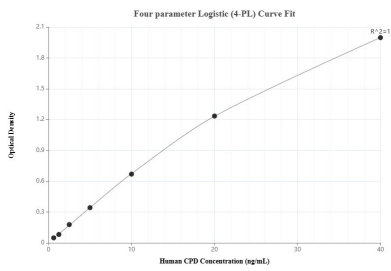
Storage buffer:

PBS only

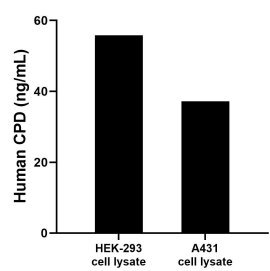
For technical support and original validation data for this product please contact:

T: 1 (888) 4PTGLAB (1-888-478-4522) (toll free
in USA), or 1(312) 455-8498 (outside USA)E: proteintech@ptglab.com
W: ptglab.com**This product is exclusively available under Proteintech Group brand and is not available to purchase from any other manufacturer.**

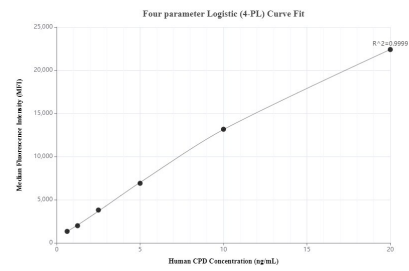
Selected Validation Data



Sandwich ELISA standard curve of MP00185-1, Human CPD Recombinant Matched Antibody Pair - PBS only. 83229-3-PBS was coated to a plate as the capture antibody and incubated with serial dilutions of standard Ag34646. 83229-1-PBS was HRP conjugated as the detection antibody. Range: 0.625-40 ng/mL



HEK-293 and A431 cell lysate were measured. The human CPD concentration of detected samples was determined to be 55.8 ng/mL (based on a 1.2 mg/mL extract load) in HEK-293 cell lysate and 37.2 ng/mL (based on a 1.5 mg/mL extract load) in A431 cell lysate.



Cytometric bead array standard curve of MP00185-1, CPD Recombinant Matched Antibody Pair, PBS Only. Capture antibody: 83229-3-PBS. Detection antibody: 83229-1-PBS. Standard: Ag34646. Range: 0.625-20 ng/mL