

# USP8 Recombinant Matched Antibody Pair, PBS Only

Catalog Number: **MP00188-1**

## Capture Antibody Information

**Catalog Number:**

83172-2-PBS

**Host:**

Rabbit

**Isotype:**

IgG

**Purification Method:**

Protein A purification

**Clone ID:**

240016D3

**Reactivity:**

human

**Immunogen Catalog Number:**

Ag27143

**Conjugate:**

Unconjugated

**Full name:**

ubiquitin specific peptidase 8

**Gene ID:**

9101

## Detection Antibody Information

**Catalog Number:**

83172-1-PBS

**Host:**

Rabbit

**Isotype:**

IgG

**Purification Method:**

Protein A purification

**Clone ID:**

240016A3

**Reactivity:**

human

**GenBank:**

BC110590

**Immunogen Catalog Number:**

Ag27143

**Conjugate:**

Unconjugated

**Full name:**

ubiquitin specific peptidase 8

**Gene ID:**

9101

## Applications

**Tested Applications:**

Cytometric bead array, Sandwich ELISA

**Range:**1.25-20 ng/mL (Cytometric Bead Array)  
0.625-40 ng/mL (Sandwich ELISA)**Recommended Dilutions:**

It is recommended that this reagent should be titrated in each testing system to obtain optimal results.

## Product Information

MP00188-1 targets USP8 in immunoassays as a matched antibody pair. Validated in Cytometric bead array, Sandwich ELISA.

Capture antibody: USP8 Recombinant antibody, PBS Only (Capture) 83172-2-PBS (240016D3). 100 µg. Concentration 1 mg/mL.

Detection antibody: USP8 Recombinant antibody, PBS Only (Detector) 83172-1-PBS (240016A3). 100 µg. Concentration 1 mg/mL.

Alternative USP8 matched antibody pairs: MP00188-2

Unconjugated rabbit recombinant monoclonal antibody pair in PBS only storage buffer at a concentration of 1 mg/mL, ready for conjugation. Created using Proteintech's proprietary in-house recombinant technology. Recombinant production enables unrivalled batch-to-batch consistency, easy scale-up, and future security of supply.

Matched antibody pairs are designed for use in a variety of assays and platforms that require matched antibody pairs.

Antibody use should be optimized for each application and assay.

## Storage

**Storage:**

Store at -80°C.

**Storage buffer:**

PBS only

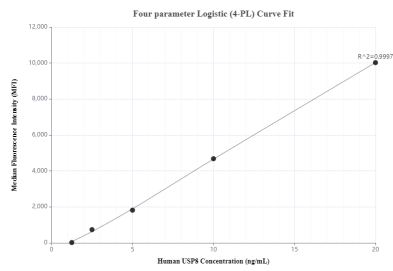
For technical support and original validation data for this product please contact:

T: 1 (888) 4PTGLAB (1-888-478-4522) (toll free in USA), or 1(312) 455-8498 (outside USA)

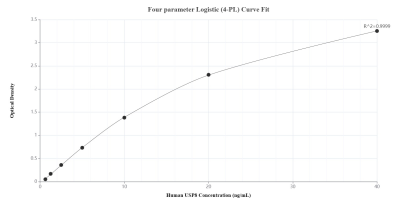
E: [proteintech@ptglab.com](mailto:proteintech@ptglab.com)  
W: [ptglab.com](http://ptglab.com)

This product is exclusively available under Proteintech Group brand and is not available to purchase from any other manufacturer.

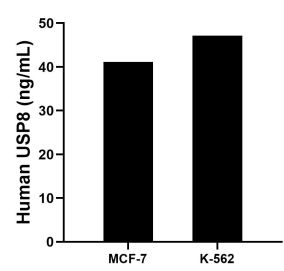
## Selected Validation Data



Cytometric bead array standard curve of MP00188-1, USP8 Recombinant Matched Antibody Pair, PBS Only. Capture antibody: 83172-2-PBS. Detection antibody: 83172-1-PBS. Standard: Ag27143. Range: 1.25-20 ng/mL.



Sandwich ELISA standard curve of MP00188-1, Human USP8 Recombinant Matched Antibody Pair - PBS only. 83172-2-PBS was coated to a plate as the capture antibody and incubated with serial dilutions of standard Ag27143. 83172-1-PBS was HRP conjugated as the detection antibody. Range: 0.625-40 ng/mL.



The mean USP8 concentration was determined to be 41.15 ng/mL in MCF-7 cell extract based on a 4.30 mg/mL extract load and 47.12 ng/mL in K-562 cell extract based on a 4.50 mg/mL extract load.