

For Research Use Only



# APCDD1 Recombinant Matched Antibody Pair, PBS Only

Catalog Number:MP00199-4

## Capture Antibody Information

Catalog Number:  
83246-1-PBS  
Host:  
Rabbit  
Isotype:  
IgG  
Purification Method:  
Protein A purification

Clone ID:  
240085A5  
Reactivity:  
human  
Immunogen Catalog Number:  
Ag10303

Conjugate:  
Unconjugated  
Full name:  
adenomatosis polyposis coli down-regulated 1  
Gene ID:  
147495

## Detection Antibody Information

Catalog Number:  
83246-2-PBS  
Host:  
Rabbit  
Isotype:  
IgG  
Purification Method:  
Protein A purification

Clone ID:  
240085D8  
Reactivity:  
human  
GenBank:  
BC053324  
Immunogen Catalog Number:  
Ag10303

Conjugate:  
Unconjugated  
Full name:  
adenomatosis polyposis coli down-regulated 1  
Gene ID:  
147495

## Applications

Tested Applications:  
Sandwich ELISA

Range:  
0.781-50 ng/mL (Sandwich ELISA)

Recommended Dilutions:  
It is recommended that this reagent should be titrated in each testing system to obtain optimal results.

## Product Information

MP00199-4 targets APCDD1 in immunoassays as a matched antibody pair. Validated in Sandwich ELISA.

Capture antibody: APCDD1 Recombinant antibody, PBS Only (Capture/Detector) 83246-1-PBS (240085A5). 100 µg. Concentration 1 mg/mL.

Detection antibody: APCDD1 Recombinant antibody, PBS Only (Capture/Detector) 83246-2-PBS (240085D8). 100 µg. Concentration 1 mg/mL.

Unconjugated rabbit recombinant monoclonal antibody pair in PBS only storage buffer at a concentration of 1 mg/mL, ready for conjugation. Created using Proteintech's proprietary in-house recombinant technology. Recombinant production enables unrivalled batch-to-batch consistency, easy scale-up, and future security of supply.

Matched antibody pairs are designed for use in a variety of assays and platforms that require matched antibody pairs.

Antibody use should be optimized for each application and assay.

## Storage

Storage:  
Store at -80°C.  
Storage buffer:  
PBS only

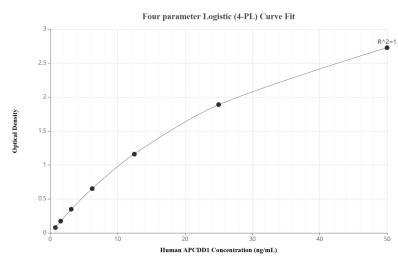
For technical support and original validation data for this product please contact:

T: 1 (888) 4PTGLAB (1-888-478-4522) (toll free in USA), or 1(312) 455-8498 (outside USA)

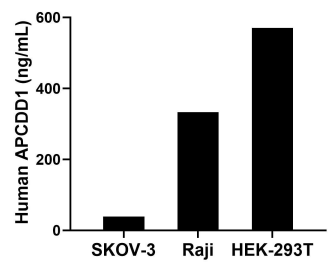
E: [proteintech@ptglab.com](mailto:proteintech@ptglab.com)  
W: [ptglab.com](http://ptglab.com)

This product is exclusively available under Proteintech Group brand and is not available to purchase from any other manufacturer.

## Selected Validation Data



Sandwich ELISA standard curve of MP00199-4, Human APCDD1 Recombinant Matched Antibody Pair - PBS only. 83246-1-PBS was coated to a plate as the capture antibody and incubated with serial dilutions of standard Ag10303. 83246-2-PBS was HRP conjugated as the detection antibody. Range: 0.781-50 ng/mL



The mean APCDD1 concentration was determined to be 39.03 ng/mL in SKOV-3 cell extract based on a 4.20 mg/mL extract load, 333.27 ng/mL in Raji cell extract based on a 3.00 mg/mL extract load and 570.52 ng/mL in HEK-293T cell extract based on a 2.60 mg/mL extract load.