

For Research Use Only



MTNR1A Recombinant Matched Antibody Pair, PBS Only

Catalog Number:MP00214-3

Capture Antibody Information

Catalog Number: 83234-2-PBS	Clone ID: 240005C3	Conjugate: Unconjugated
Host: Rabbit	Reactivity: human	Full name: melatonin receptor 1A
Isotype: IgG	Immunogen Catalog Number: Ag24198	Gene ID: 4543
Purification Method: Protein A purification		

Detection Antibody Information

Catalog Number: 83234-5-PBS	Clone ID: 240005G10	Conjugate: Unconjugated
Host: Rabbit	Reactivity: human	Full name: melatonin receptor 1A
Isotype: IgG	GenBank: BC074947	Gene ID: 4543
Purification Method: Protein A purification	Immunogen Catalog Number: Ag24198	

Applications

Tested Applications: Sandwich ELISA	Range: 0.313-20 ng/mL (Sandwich ELISA)	Recommended Dilutions: It is recommended that this reagent should be titrated in each testing system to obtain optimal results.
--	---	--

Product Information

MP00214-3 targets MTNR1A in immunoassays as a matched antibody pair. Validated in Sandwich ELISA.

Capture antibody: MTNR1A Recombinant antibody, PBS Only (Capture/Detector) 83234-2-PBS (240005C3). 100 µg. Concentration 1 mg/mL.

Detection antibody: MTNR1A Recombinant antibody, PBS Only (Detector) 83234-5-PBS (240005G10). 100 µg. Concentration 1 mg/mL.

Unconjugated rabbit recombinant monoclonal antibody pair in PBS only storage buffer at a concentration of 1 mg/mL, ready for conjugation. Created using Proteintech's proprietary in-house recombinant technology. Recombinant production enables unrivalled batch-to-batch consistency, easy scale-up, and future security of supply.

Matched antibody pairs are designed for use in a variety of assays and platforms that require matched antibody pairs.

Antibody use should be optimized for each application and assay.

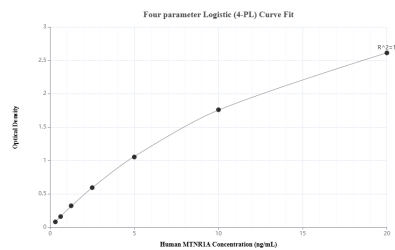
Storage

Storage:
Store at -80°C.
Storage buffer:
PBS only

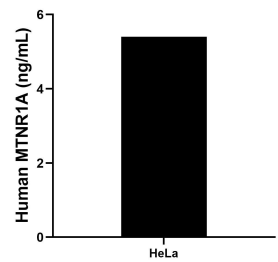
For technical support and original validation data for this product please contact:
T: 1 (888) 4PTGLAB (1-888-478-4522) (toll free in USA), or 1(312) 455-8498 (outside USA)
E: proteintech@ptglab.com
W: ptglab.com

This product is exclusively available under Proteintech Group brand and is not available to purchase from any other manufacturer.

Selected Validation Data



Sandwich ELISA standard curve of MP00214-3, Human MTNR1A Recombinant Matched Antibody Pair - PBS only. 83234-2-PBS was coated to a plate as the capture antibody and incubated with serial dilutions of standard Ag24198. 83234-5-PBS was HRP conjugated as the detection antibody. Range: 0.313-20 ng/mL



The mean MTNR1A concentration was determined to be 5.40 ng/mL in HeLa cell extract based on a 1.0 mg/mL extract load.