

JAM-A/CD321 Recombinant Matched Antibody Pair, PBS Only

Catalog Number: **MP00247-2**

Capture Antibody Information

Catalog Number:
84720-1-PBS
Host:
Rabbit
Isotype:
IgG
Purification Method:
Protein A purification

Clone ID:
242290B3
Reactivity:
human

Conjugate:
Unconjugated
Full name:
F11 receptor
Gene ID:
50848

Detection Antibody Information

Catalog Number:
84720-3-PBS
Host:
Rabbit
Isotype:
IgG
Purification Method:
Protein A purification

Clone ID:
242290F8
Reactivity:
human
GenBank:
NM_016946.6

Conjugate:
Unconjugated
Full name:
F11 receptor
Gene ID:
50848

Applications

Tested Applications:
Cytometric bead array, Sandwich ELISA

Range:
0.313-20 ng/mL (Cytometric Bead Array)
9.77-625 pg/mL (Sandwich ELISA)

Recommended Dilutions:
It is recommended that this reagent should be titrated in each testing system to obtain optimal results.

Product Information

MP00247-2 targets JAM-A/CD321 in immunoassays as a matched antibody pair. Validated in Cytometric bead array, Sandwich ELISA.

Capture antibody: JAM-A/CD321 Recombinant antibody, PBS Only (Capture) 84720-1-PBS (242290B3). 100 µg. Concentration 1 mg/mL.

Detection antibody: JAM-A/CD321 Recombinant antibody, PBS Only (Detector) 84720-3-PBS (242290F8). 100 µg. Concentration 1 mg/mL.

Unconjugated rabbit recombinant monoclonal antibody pair in PBS only storage buffer at a concentration of 1 mg/mL, ready for conjugation. Created using Proteintech's proprietary in-house recombinant technology. Recombinant production enables unrivalled batch-to-batch consistency, easy scale-up, and future security of supply.

Matched antibody pairs are designed for use in a variety of assays and platforms that require matched antibody pairs.

Antibody use should be optimized for each application and assay.

Storage

Storage:
Store at -80°C.
Storage buffer:
PBS only

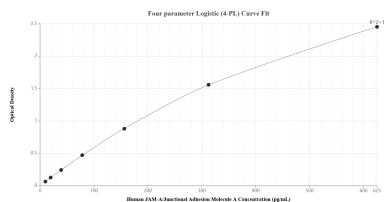
For technical support and original validation data for this product please contact:

T: 1 (888) 4PTGLAB (1-888-478-4522) (toll free in USA), or 1(312) 455-8498 (outside USA)

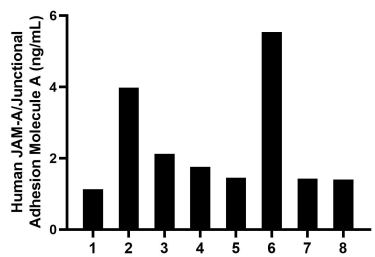
E: proteintech@ptglab.com
W: ptglab.com

This product is exclusively available under Proteintech Group brand and is not available to purchase from any other manufacturer.

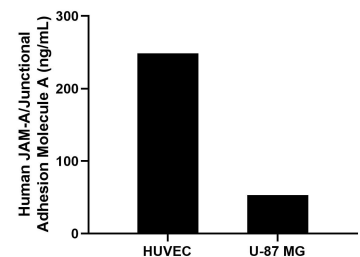
Selected Validation Data



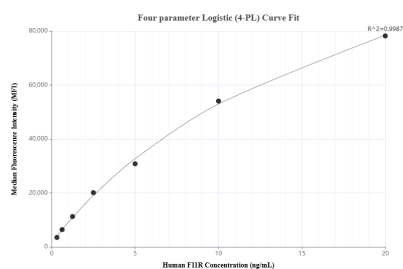
Sandwich ELISA standard curve of MP00247-2, Human JAM-A/Junctional Adhesion Molecule A Recombinant Matched Antibody Pair - PBS only. 84720-1-PBS was coated to a plate as the capture antibody and incubated with serial dilutions of standard Eg1372. 84720-3-PBS was HRP conjugated as the detection antibody. Range: 9.77-625 pg/mL.



Serum of eight individual healthy human donors was measured. The JAM-A/Junctional Adhesion Molecule A concentration of detected samples was determined to be 2.4 ng/mL with a range of 1.1-5.5 ng/mL.



The mean JAM-A/Junctional Adhesion Molecule A concentration was determined to be 248.8 ng/mL in HUVEC cell extract based on a 1.1 mg/mL extract load and 53.3 ng/mL in U-87 MG cell extract based on a 2.0 mg/mL extract load.



Cytometric bead array standard curve of MP00247-2, F11R Recombinant Matched Antibody Pair, PBS Only. Capture antibody: 84720-1-PBS. Detection antibody: 84720-3-PBS. Standard: Eg1372. Range: 0.313-20 ng/mL.