

B7-H3/CD276 Recombinant Matched Antibody Pair, PBS Only

Catalog Number: **MP00248-3**

Capture Antibody Information

Catalog Number:
83152-2-PBS
Host:
Rabbit
Isotype:
IgG
Purification Method:
Protein A purification

Clone ID:
230305C1
Reactivity:
human

Conjugate:
Unconjugated
Full name:
CD276 molecule
Gene ID:
80381

Detection Antibody Information

Catalog Number:
83152-1-PBS
Host:
Rabbit
Isotype:
IgG
Purification Method:
Protein A purification

Clone ID:
230305A5
Reactivity:
human
GenBank:
NM_001024736

Conjugate:
Unconjugated
Full name:
CD276 molecule
Gene ID:
80381

Applications

Tested Applications:
Cytometric bead array, Sandwich ELISA

Range:
0.625-20 ng/mL (Cytometric Bead Array)
7.8-500 pg/mL (Sandwich ELISA)

Recommended Dilutions:
It is recommended that this reagent should be titrated in each testing system to obtain optimal results.

Product Information

MP00248-3 targets B7-H3/CD276 in immunoassays as a matched antibody pair. Validated in Cytometric bead array, Sandwich ELISA.

Capture antibody: CD276 Recombinant antibody, PBS Only (Capture) 83152-2-PBS (230305C1). 100 µg. Concentration 1 mg/mL.

Detection antibody: CD276 Recombinant antibody, PBS Only (Detector) 83152-1-PBS (230305A5). 100 µg. Concentration 1 mg/mL.

Unconjugated rabbit recombinant monoclonal antibody pair in PBS only storage buffer at a concentration of 1 mg/mL, ready for conjugation. Created using Proteintech's proprietary in-house recombinant technology. Recombinant production enables unrivalled batch-to-batch consistency, easy scale-up, and future security of supply.

Matched antibody pairs are designed for use in a variety of assays and platforms that require matched antibody pairs.

Antibody use should be optimized for each application and assay.

Storage

Storage:
Store at -80°C.
Storage buffer:
PBS only

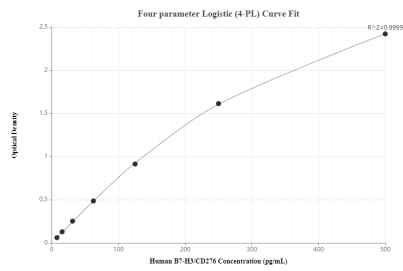
For technical support and original validation data for this product please contact:

T: 1 (888) 4PTGLAB (1-888-478-4522) (toll free in USA), or 1(312) 455-8498 (outside USA)

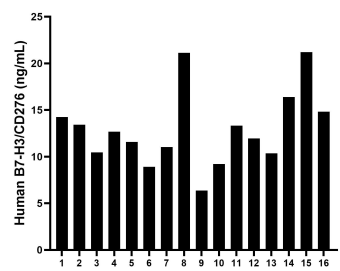
E: proteintech@ptglab.com
W: ptglab.com

This product is exclusively available under Proteintech Group brand and is not available to purchase from any other manufacturer.

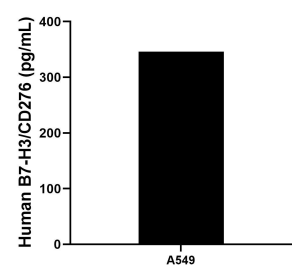
Selected Validation Data



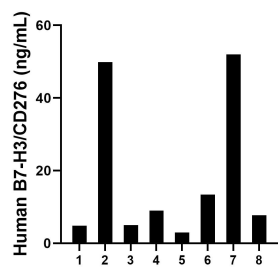
Sandwich ELISA standard curve of MP00248-3, Human B7-H3/CD276 Recombinant Matched Antibody Pair - PBS only. 83152-2-PBS was coated to a plate as the capture antibody and incubated with serial dilutions of standard Eg0075. 83152-1-PBS was HRP conjugated as the detection antibody. Range: 7.8-500 pg/mL



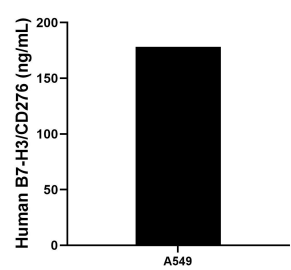
Plasma of sixteen individual healthy human donors was measured. The B7-H3/CD276 concentration of detected samples was determined to be 12.9 ng/mL with a range of 6.4 - 21.2 ng/mL



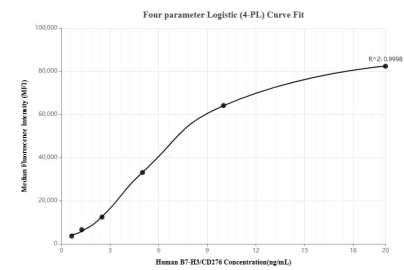
A549 were cultured in DMEM supplemented with 10% fetal bovine serum, 2.5 mM L-glutamine, 100 U/mL penicillin, and 100 µg/mL streptomycin sulfate. An aliquot of the cell culture supernate was removed, assayed for human B7-H3/CD276, and measured 346.1 pg/mL



Urine of eight individual healthy human donors was measured. The B7-H3/CD276 concentration of detected samples was determined to be 19.6 ng/mL with a range of 3.0 - 52.0 ng/mL



The mean B7-H3/CD276 concentration was determined to be 178.3 ng/mL in A549 cell extract based on a 3.8 mg/mL extract load.



Cytometric bead array standard curve of MP00248-3, B7-H3/CD276 Recombinant Matched Antibody Pair, PBS Only. Capture antibody: 83152-2-PBS. Detection antibody: 83152-1-PBS. Standard: Eg0075. Range: 0.625-20 ng/mL