

FGFR4 Recombinant Matched Antibody Pair, PBS Only

Catalog Number: **MP00257-4**

Capture Antibody Information

Catalog Number:
83153-6-PBS
Host:
Rabbit
Isotype:
IgG
Purification Method:
Protein A purification

Clone ID:
242713E1
Reactivity:
human

Conjugate:
Unconjugated
Full name:
fibroblast growth factor receptor 4
Gene ID:
2264

Detection Antibody Information

Catalog Number:
83153-5-PBS
Host:
Rabbit
Isotype:
IgG
Purification Method:
Protein A purification

Clone ID:
242713G6
Reactivity:
human
GenBank:
BC011847

Conjugate:
Unconjugated
Full name:
fibroblast growth factor receptor 4
Gene ID:
2264

Applications

Tested Applications:
Sandwich ELISA

Range:
3.13-200 ng/mL (Sandwich ELISA)

Recommended Dilutions:
It is recommended that this reagent should be titrated in each testing system to obtain optimal results.

Product Information

MP00257-4 targets FGFR4 in immunoassays as a matched antibody pair. Validated in Sandwich ELISA.

Capture antibody: FGFR4 Recombinant antibody, PBS Only (Capture) 83153-6-PBS (242713E1). 100 µg. Concentration 1 mg/mL.

Detection antibody: FGFR4 Recombinant antibody, PBS Only (Detector) 83153-5-PBS (242713G6). 100 µg. Concentration 1 mg/mL.

Unconjugated rabbit recombinant monoclonal antibody pair in PBS only storage buffer at a concentration of 1 mg/mL, ready for conjugation. Created using Proteintech's proprietary in-house recombinant technology. Recombinant production enables unrivalled batch-to-batch consistency, easy scale-up, and future security of supply.

Matched antibody pairs are designed for use in a variety of assays and platforms that require matched antibody pairs.

Antibody use should be optimized for each application and assay.

Storage

Storage:
Store at -80°C.
Storage buffer:
PBS only

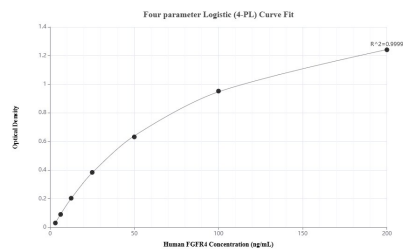
For technical support and original validation data for this product please contact:

T: 1 (888) 4PTGLAB (1-888-478-4522) (toll free in USA), or 1(312) 455-8498 (outside USA)

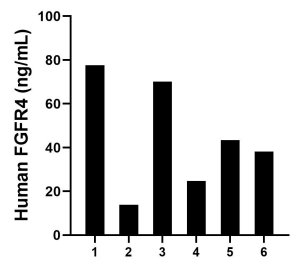
E: proteintech@ptglab.com
W: ptglab.com

This product is exclusively available under Proteintech Group brand and is not available to purchase from any other manufacturer.

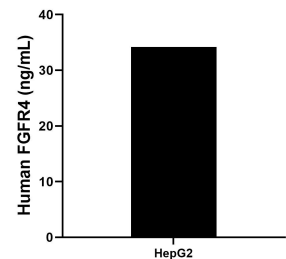
Selected Validation Data



Sandwich ELISA standard curve of MP00257-4, Human FGFR4 Recombinant Matched Antibody Pair - PBS only. 83153-6-PBS was coated to a plate as the capture antibody and incubated with serial dilutions of standard Eg3510. 83153-5-PBS was HRP conjugated as the detection antibody. Range: 3.13-200 ng/mL



Serum of six individual healthy human donors was measured. The human FGFR4 concentration of detected samples was determined to be 44.65 ng/mL with a range of 13.85 - 77.61 ng/mL



HepG2 cells were cultured in DMEM supplemented with 10% fetal bovine serum, 100 U/mL penicillin, and 100 µg/mL streptomycin sulfate. Aliquots of the cell culture supernatants were removed assayed for levels of FGFR4 and measured 44.65 ng/mL