

# MMP1 Recombinant Matched Antibody Pair, PBS Only

Catalog Number:MP00290-1

## Capture Antibody Information

**Catalog Number:**  
83114-4-PBS  
**Host:**  
Rabbit  
**Isotype:**  
IgG  
**Purification Method:**  
Protein A purification

**Clone ID:**  
230343C12  
**Reactivity:**  
human

**Conjugate:**  
Unconjugated  
**Full name:**  
matrix metalloproteinase 1  
(interstitial collagenase)  
**Gene ID:**  
4312

## Detection Antibody Information

**Catalog Number:**  
83114-3-PBS  
**Host:**  
Rabbit  
**Isotype:**  
IgG  
**Purification Method:**  
Protein A purification

**Clone ID:**  
230343B6  
**Reactivity:**  
human  
**GenBank:**  
BC013875

**Conjugate:**  
Unconjugated  
**Full name:**  
matrix metalloproteinase 1  
(interstitial collagenase)  
**Gene ID:**  
4312

## Applications

**Tested Applications:**  
Cytometric bead array, Sandwich ELISA

**Range:**  
0.625-20 ng/mL (Cytometric Bead Array)  
19.5-1250 pg/mL (Sandwich ELISA)

**Recommended Dilutions:**  
It is recommended that this reagent should be titrated in each testing system to obtain optimal results.

## Product Information

MP00290-1 targets MMP1 in immunoassays as a matched antibody pair. Validated in Cytometric bead array, Sandwich ELISA.

Capture antibody: MMP1 Recombinant antibody, PBS Only (Capture) 83114-4-PBS (230343C12). 100 µg. Concentration 1 mg/mL.

Detection antibody: MMP1 Recombinant antibody, PBS Only (Detector) 83114-3-PBS (230343B6). 100 µg. Concentration 1 mg/mL.

Alternative MMP1 matched antibody pairs: MP00290-2, MP50047-1

Unconjugated rabbit recombinant monoclonal antibody pair in PBS only storage buffer at a concentration of 1 mg/mL, ready for conjugation. Created using Proteintech's proprietary in-house recombinant technology. Recombinant production enables unrivalled batch-to-batch consistency, easy scale-up, and future security of supply.

Matched antibody pairs are designed for use in a variety of assays and platforms that require matched antibody pairs.

Antibody use should be optimized for each application and assay.

## Storage

**Storage:**  
Store at -80°C.  
**Storage buffer:**  
PBS only

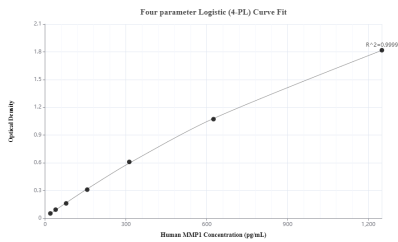
For technical support and original validation data for this product please contact:

T: 1 (888) 4PTGLAB (1-888-478-4522) (toll free in USA), or 1(312) 455-8498 (outside USA)

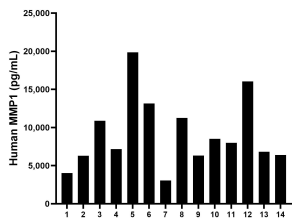
E: [proteintech@ptglab.com](mailto:proteintech@ptglab.com)  
W: [ptglab.com](http://ptglab.com)

**This product is exclusively available under Proteintech Group brand and is not available to purchase from any other manufacturer.**

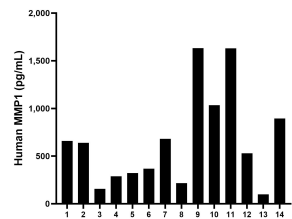
Selected Validation Data



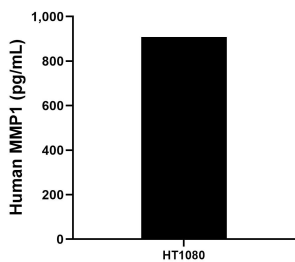
Sandwich ELISA standard curve ofMP00290-1, MMP1 Recombinant Matched Antibody Pair, PBS Only. 83114-4-PBS was coated to a plate as the capture antibody and incubated with serial dilutions of standard Eg0527. 83114-3-PBS was HRP conjugated as the detection antibody. Range: 19.5-1250 pg/mL.



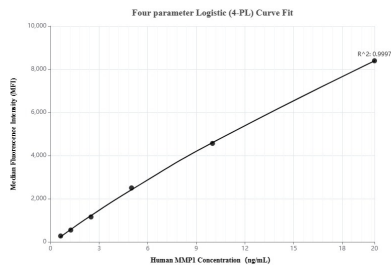
Serum of fourteen individual healthy human donors were measured. The human MMP1 concentration of detected samples was determined to be 9,124.3 pg/mL with a range of 3,045.5 - 19,864.3 pg/mL.



Plasma of fourteen individual healthy human donors were measured. The human MMP1 concentration of detected samples was determined to be 653.4 pg/mL with a range of 99.3 - 1,631.8 pg/mL.



HT1080 were cultured in DMEM supplemented with 10% fetal bovine serum, 2.5 mM L-glutamine, 100 U/mL penicillin, and 100 µg/mL streptomycin sulfate. An aliquot of the cell culture supernate was removed, assayed for human MMP1, and measured 907.5 pg/mL.



Cytometric bead array standard curve ofMP00290-1, MMP1 Recombinant Matched Antibody Pair, PBS Only. Capture antibody: 83114-4-PBS. Detection antibody: 83114-3-PBS. Standard: Eg0527. Range: 0.625-20 ng/mL.