

# Mouse Lipocalin-2/NGAL Recombinant Matched Antibody Pair, PBS Only

Catalog Number: **MP00302-4**

## Capture Antibody Information

**Catalog Number:**  
83102-1-PBS  
**Host:**  
Rabbit  
**Isotype:**  
IgG  
**Purification Method:**  
Protein A purification

**Clone ID:**  
230372D6  
**Reactivity:**  
mouse

**Conjugate:**  
Unconjugated  
**Full name:**  
lipocalin 2  
**Gene ID:**  
16819

## Detection Antibody Information

**Catalog Number:**  
83102-5-PBS  
**Host:**  
Rabbit  
**Isotype:**  
IgG  
**Purification Method:**  
Protein A purification

**Clone ID:**  
230372C6  
**Reactivity:**  
mouse  
**GenBank:**  
NM\_008491.1

**Conjugate:**  
Unconjugated  
**Full name:**  
lipocalin 2  
**Gene ID:**  
16819

## Applications

**Tested Applications:**  
Sandwich ELISA

**Range:**  
6.25-400 pg/mL (Sandwich ELISA)

**Recommended Dilutions:**  
It is recommended that this reagent should be titrated in each testing system to obtain optimal results.

## Product Information

MP00302-4 targets Lipocalin-2/NGAL in immunoassays as a matched antibody pair. Validated in Sandwich ELISA.

Capture antibody: Mouse Lipocalin-2/NGAL Recombinant antibody, PBS Only (Capture) 83102-1-PBS (230372D6). 100 µg. Concentration 1 mg/mL.

Detection antibody: Mouse Lipocalin-2/NGAL Recombinant antibody, PBS Only (Detector) 83102-5-PBS (230372C6). 100 µg. Concentration 1 mg/mL.

Unconjugated rabbit recombinant monoclonal antibody pair in PBS only storage buffer at a concentration of 1 mg/mL, ready for conjugation. Created using Proteintech's proprietary in-house recombinant technology. Recombinant production enables unrivalled batch-to-batch consistency, easy scale-up, and future security of supply.

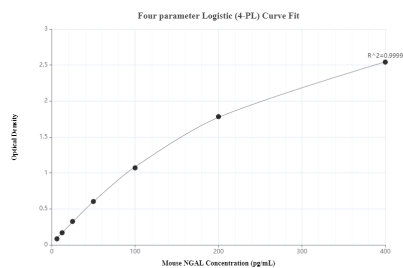
Matched antibody pairs are designed for use in a variety of assays and platforms that require matched antibody pairs.

Antibody use should be optimized for each application and assay.

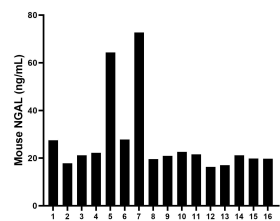
## Storage

**Storage:**  
Store at -80°C.  
**Storage buffer:**  
PBS only

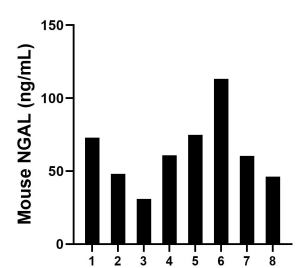
## Selected Validation Data



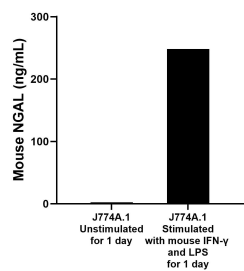
Sandwich ELISA standard curve of MP00302-4, Mouse NGAL Monoclonal Matched Antibody Pair - PBS only. 83102-1-PBS was coated to a plate as the capture antibody and incubated with serial dilutions of standard Eg0572. 83102-5-PBS was HRP conjugated as the detection antibody. Range: 6.25-400 pg/mL.



Serum of sixteen mice were measured. The NGAL concentration of detected samples was determined to be 27.0 ng/mL with a range of 16.3 - 72.7 ng/mL.



Urine of eight mice were measured. The NGAL concentration of detected samples was determined to be 63.5 ng/mL with a range of 31.0 - 113.3 ng/mL.



Mouse reticulum cell sarcoma macrophage cells ( $0.5 \times 10^6$  cells/mL) were cultured for 1 day in DMEM supplemented with 10% fetal bovine serum containing 20 ng/mL of recombinant mouse IFN- $\gamma$  and 1  $\mu$ g/mL of lipopolysaccharide. The mean NGAL concentration was determined to be 2.3 ng/mL in unstimulated J774A.1 supernatant, 248.3 ng/mL in stimulated J774A.1 supernatant.