

STX1B Recombinant Matched Antibody Pair, PBS Only

Catalog Number: **MP00312-1**

Capture Antibody Information

Catalog Number:
83298-1-PBS

Host:
Rabbit

Isotype:
IgG

Purification Method:
Protein A purification

Clone ID:
240156B9

Reactivity:
human, mouse

Immunogen Catalog Number:
Ag10275

Conjugate:
Unconjugated

Full name:
syntaxin 1B

Gene ID:
112755

Detection Antibody Information

Catalog Number:
83298-4-PBS

Host:
Rabbit

Isotype:
IgG

Purification Method:
Protein A purification

Clone ID:
240156F6

Reactivity:
human

GenBank:
BC062298

Immunogen Catalog Number:
Ag10275

Conjugate:
Unconjugated

Full name:
syntaxin 1B

Gene ID:
112755

Applications

Tested Applications:

Cytometric bead array, Sandwich
ELISA

Range:

1.25-40 ng/mL (Cytometric Bead
Array)
31.25-2000 pg/mL (Sandwich ELISA)

Recommended Dilutions:

It is recommended that this reagent
should be titrated in each testing
system to obtain optimal results.

Product Information

MP00312-1 targets STX1B in immunoassays as a matched antibody pair. Validated in Cytometric bead array, Sandwich ELISA.

Capture antibody: STX1B Recombinant antibody, PBS Only (Capture) 83298-1-PBS (240156B9). 100 µg. Concentration 1 mg/mL.

Detection antibody: STX1B Recombinant antibody, PBS Only (Detector) 83298-4-PBS (240156F6). 100 µg. Concentration 1 mg/mL.

Alternative STX1B matched antibody pairs: MP00312-2, MP00312-3

Unconjugated rabbit recombinant monoclonal antibody pair in PBS only storage buffer at a concentration of 1 mg/mL, ready for conjugation. Created using Proteintech's proprietary in-house recombinant technology. Recombinant production enables unrivalled batch-to-batch consistency, easy scale-up, and future security of supply.

Matched antibody pairs are designed for use in a variety of assays and platforms that require matched antibody pairs.

Antibody use should be optimized for each application and assay.

Storage

Storage:

Store at -80°C.

Storage buffer:
PBS only

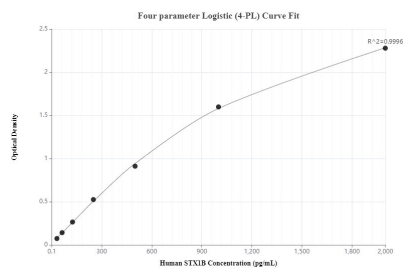
For technical support and original validation data for this product please contact:

T: 1 (888) 4PTGLAB (1-888-478-4522) (toll free
in USA), or 1(312) 455-8498 (outside USA)

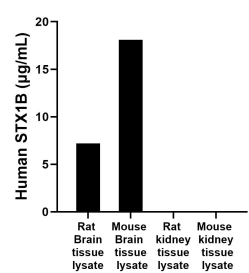
E: proteintech@ptglab.com
W: ptglab.com

This product is exclusively available under Proteintech Group brand and is not available to purchase from any other manufacturer.

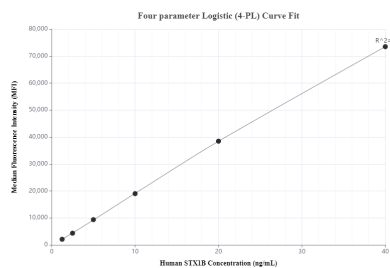
Selected Validation Data



Sandwich ELISA standard curve of MP00312-1, Human STX1B Monoclonal Matched Antibody Pair - PBS only. 83298-1-PBS was coated to a plate as the capture antibody and incubated with serial dilutions of standard Ag10275. 83298-4-PBS was HRP conjugated as the detection antibody. Range: 31.25-2000 pg/mL.



The mean human STX1B concentration was determined to be 7.2 µg/mL in rat Brain tissue lysate based on a 3.0 mg/mL extract load. The mean human STX1B concentration was determined to be 18.1 µg/mL in mouse Brain tissue lysate based on a 2 mg/mL extract load. The mean human STX1B concentration was determined to be 7.0 ng/mL in rat kidney tissue lysate based on a 3 mg/mL extract load. The mean human STX1B concentration was determined to be 15.1 ng/mL in mouse kidney



Cytometric bead array standard curve of MP00312-1, STX1B Recombinant Matched Antibody Pair, PBS Only. Capture antibody: 83298-1-PBS. Detection antibody: 83298-4-PBS. Standard: Ag10275. Range: 1.25-40 ng/mL.