

For Research Use Only

# Mouse Albumin Recombinant Matched Antibody Pair, PBS Only



Catalog Number:MP00329-4

## Capture Antibody Information

Catalog Number:  
83289-5-PBS

Host:  
Rabbit

Isotype:  
IgG

Purification Method:  
Protein A purification

Clone ID:  
240245F7

Reactivity:  
mouse

Conjugate:  
Unconjugated

Full name:  
albumin

Gene ID:  
11657

## Detection Antibody Information

Catalog Number:  
83289-3-PBS

Host:  
Rabbit

Isotype:  
IgG

Purification Method:  
Protein A purification

Clone ID:  
240245F8

Reactivity:  
mouse

GenBank:  
NM\_009654.4

Immunogen Catalog Number:  
Eg0886

Conjugate:  
Unconjugated

Full name:  
albumin

Gene ID:  
11657

## Applications

Tested Applications:  
Sandwich ELISA

Range:  
23.4-1500 pg/mL (Sandwich ELISA)

Recommended Dilutions:  
It is recommended that this reagent should be titrated in each testing system to obtain optimal results.

## Product Information

MP00329-4 targets Albumin in immunoassays as a matched antibody pair. Validated in Sandwich ELISA.

Capture antibody: Mouse Albumin Recombinant antibody, PBS Only (Capture) 83289-5-PBS (240245F7). 100 µg. Concentration 1 mg/mL.

Detection antibody: Mouse Albumin Recombinant antibody, PBS Only (Capture/Detector) 83289-3-PBS (240245F8). 100 µg. Concentration 1 mg/mL.

Unconjugated rabbit recombinant monoclonal antibody pair in PBS only storage buffer at a concentration of 1 mg/mL, ready for conjugation. Created using Proteintech's proprietary in-house recombinant technology. Recombinant production enables unrivalled batch-to-batch consistency, easy scale-up, and future security of supply.

Matched antibody pairs are designed for use in a variety of assays and platforms that require matched antibody pairs.

Antibody use should be optimized for each application and assay.

## Storage

Storage:  
Store at -80°C.  
Storage buffer:  
PBS only

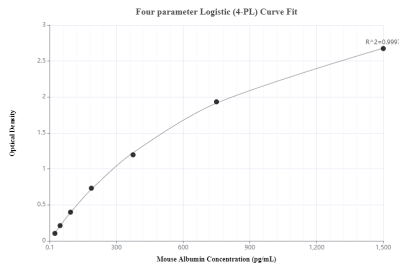
For technical support and original validation data for this product please contact:

T: 1 (888) 4PTGLAB (1-888-478-4522) (toll free in USA), or 1(312) 455-8498 (outside USA)

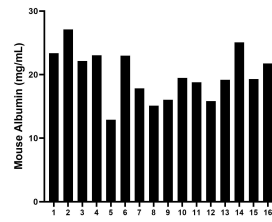
E: [proteintech@ptglab.com](mailto:proteintech@ptglab.com)  
W: [ptglab.com](http://ptglab.com)

**This product is exclusively available under Proteintech Group brand and is not available to purchase from any other manufacturer.**

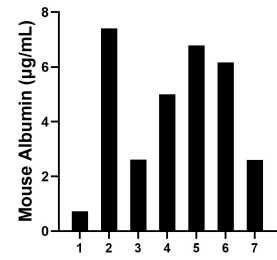
## Selected Validation Data



Sandwich ELISA standard curve of MP00329-4, Mouse Albumin Recombinant Matched Antibody Pair - PBS only. 83289-5-PBS was coated to a plate as the capture antibody and incubated with serial dilutions of standard Eg0886. 83289-3-PBS was HRP conjugated as the detection antibody. Range: 23.4-1500 pg/mL



Serum of sixteen mice was measured. The Albumin concentration of detected samples was determined to be 20.0 mg/mL with a range of 12.9-27.1 mg/mL



Urine of seven mice was measured. The Albumin concentration of detected samples was determined to be 4.5 µg/mL with a range of 0.7-7.4 µg/mL