

# SMARCA4 Recombinant Matched Antibody Pair, PBS Only

Catalog Number: MP00334-1

## Capture Antibody Information

**Catalog Number:**  
83310-1-PBS

**Host:**  
Rabbit

**Isotype:**  
IgG

**Purification Method:**  
Protein A purification

**Clone ID:**  
240172D5

**Reactivity:**  
human

**Immunogen Catalog Number:**  
Ag16256

**Conjugate:**  
Unconjugated

**Full name:**  
SWI/SNF related, matrix associated, actin dependent regulator of chromatin, subfamily a, member 4

**Gene ID:**  
6597

## Detection Antibody Information

**Catalog Number:**  
83310-2-PBS

**Host:**  
Rabbit

**Isotype:**  
IgG

**Purification Method:**  
Protein A purification

**Clone ID:**  
240172F4

**Reactivity:**  
human, mouse, rat

**GenBank:**  
BC150298

**Immunogen Catalog Number:**  
Ag16256

**Conjugate:**  
Unconjugated

**Full name:**  
SWI/SNF related, matrix associated, actin dependent regulator of chromatin, subfamily a, member 4

**Gene ID:**  
6597

## Applications

**Tested Applications:**  
Cytometric bead array, Sandwich ELISA

**Range:**  
0.313-40 ng/mL (Cytometric Bead Array)  
78.1-5000 pg/mL (Sandwich ELISA)

**Recommended Dilutions:**  
It is recommended that this reagent should be titrated in each testing system to obtain optimal results.

## Product Information

MP00334-1 targets SMARCA4 in immunoassays as a matched antibody pair. Validated in Cytometric bead array, Sandwich ELISA.

Capture antibody: SMARCA4 Recombinant antibody, PBS Only (Capture) 83310-1-PBS (240172D5). 100 µg. Concentration 1 mg/mL.

Detection antibody: SMARCA4 Recombinant antibody, PBS Only (Detector) 83310-2-PBS (240172F4). 100 µg. Concentration 1 mg/mL.

Alternative SMARCA4 matched antibody pairs: MP00334-2, MP00334-3

Unconjugated rabbit recombinant monoclonal antibody pair in PBS only storage buffer at a concentration of 1 mg/mL, ready for conjugation. Created using Proteintech's proprietary in-house recombinant technology. Recombinant production enables unrivalled batch-to-batch consistency, easy scale-up, and future security of supply.

Matched antibody pairs are designed for use in a variety of assays and platforms that require matched antibody pairs.

Antibody use should be optimized for each application and assay.

## Storage

**Storage:**  
Store at -80°C.

**Storage buffer:**  
PBS only

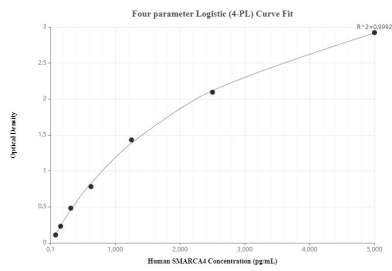
For technical support and original validation data for this product please contact:

T: 1 (888) 4PTGLAB (1-888-478-4522) (toll free in USA), or 1(312) 455-8498 (outside USA)

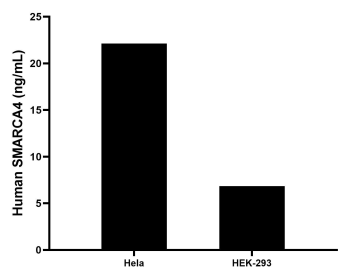
E: [proteintech@ptglab.com](mailto:proteintech@ptglab.com)  
W: [ptglab.com](http://ptglab.com)

This product is exclusively available under Proteintech Group brand and is not available to purchase from any other manufacturer.

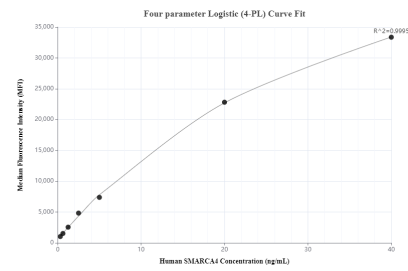
## Selected Validation Data



Sandwich ELISA standard curve of MP00334-1, Human SMARCA4 Recombinant Matched Antibody Pair - PBS only. 83310-1-PBS was coated to a plate as the capture antibody and incubated with serial dilutions of standard Ag16256. 83310-2-PBS was HRP conjugated as the detection antibody. Range: 78.1-5000 pg/mL



The mean SMARCA4 concentration was determined to be 22.1 ng/mL in HeLa cell extract based on a 3.6 mg/mL extract load and 6.9 ng/mL in HEK-293 cell extract based on a 4.6 mg/mL extract load.



Cytometric bead array standard curve of MP00334-1, SMARCA4 Recombinant Matched Antibody Pair, PBS Only. Capture antibody: 83310-1-PBS. Detection antibody: 83310-2-PBS. Standard: Ag16256. Range: 0.313-40 ng/mL