

MUC1/CA15-3 C-terminal Recombinant Matched Antibody Pair, PBS Only

Catalog Number: **MP00335-1**

Capture Antibody Information

Catalog Number:

83311-3-PBS

Host:

Rabbit

Isotype:

IgG

Purification Method:

Protein A purification

Clone ID:

240190D12

Reactivity:

human

Immunogen Catalog Number:

Ag20366

Conjugate:

Unconjugated

Full name:

mucin 1, cell surface associated

Gene ID:

4582

Detection Antibody Information

Catalog Number:

83311-1-PBS

Host:

Rabbit

Isotype:

IgG

Purification Method:

Protein A purification

Clone ID:

240190A2

Reactivity:

human

GenBank:

BC120975

Immunogen Catalog Number:

Ag20366

Conjugate:

Unconjugated

Full name:

mucin 1, cell surface associated

Gene ID:

4582

Applications

Tested Applications:Cytometric bead array, Sandwich
ELISA**Range:**0.78-100 ng/mL (Cytometric Bead
Array)
78.1-5000 pg/mL (Sandwich ELISA)**Recommended Dilutions:**It is recommended that this reagent
should be titrated in each testing
system to obtain optimal results.

Product Information

MP00335-1 targets MUC1/CA15-3 C-terminal in immunoassays as a matched antibody pair. Validated in Cytometric bead array, Sandwich ELISA.

Capture antibody: MUC1/CA15-3 C-terminal Recombinant antibody, PBS Only (Capture) 83311-3-PBS (240190D12). 100 µg. Concentration 1 mg/mL.

Detection antibody: MUC1/CA15-3 C-terminal Recombinant antibody, PBS Only (Detector) 83311-1-PBS (240190A2). 100 µg. Concentration 1 mg/mL.

Unconjugated rabbit recombinant monoclonal antibody pair in PBS only storage buffer at a concentration of 1 mg/mL, ready for conjugation. Created using Proteintech's proprietary in-house recombinant technology. Recombinant production enables unrivalled batch-to-batch consistency, easy scale-up, and future security of supply.

Matched antibody pairs are designed for use in a variety of assays and platforms that require matched antibody pairs.

Antibody use should be optimized for each application and assay.

Storage

Storage:

Store at -80°C.

Storage buffer:

PBS only

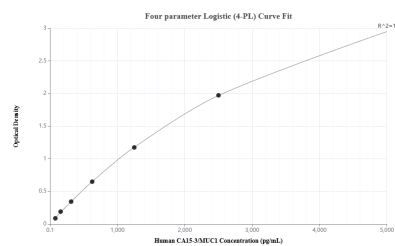
For technical support and original validation data for this product please contact:

T: 1 (888) 4PTGLAB (1-888-478-4522) (toll free
in USA), or 1(312) 455-8498 (outside USA)

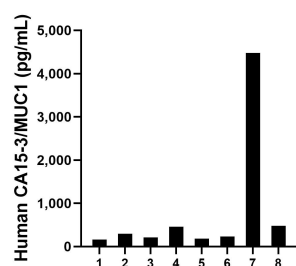
E: proteintech@ptglab.com
W: ptglab.com

This product is exclusively available under Proteintech Group brand and is not available to purchase from any other manufacturer.

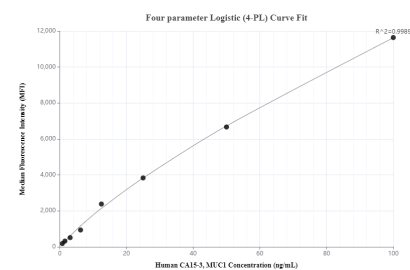
Selected Validation Data



Sandwich ELISA standard curve of MP00335-1, Human MUC1/CA15-3 C-terminal Recombinant Matched Antibody Pair - PBS only. 83311-3-PBS was coated to a plate as the capture antibody and incubated with serial dilutions of standard Ag20366. 83311-1-PBS was HRP conjugated as the detection antibody. Range: 78.1-5000 pg/mL



Serum of eight humans was measured. The human MUC1/CA15-3 C-terminal concentration of detected samples was determined to be 812.7 pg/mL with a range of 159.5 - 4,480.5 pg/mL



Cytometric bead array standard curve of MP00335-1, MUC1/CA15-3 C-terminal Recombinant Matched Antibody Pair, PBS Only. Capture antibody: 83311-3-PBS. Detection antibody: 83311-1-PBS. Standard: Ag20366. Range: 0.78-100 ng/mL