

# ZO-1 Recombinant Matched Antibody Pair, PBS Only

Catalog Number: **MP00349-4**

## Capture Antibody Information

**Catalog Number:**  
82870-2-PBS  
**Host:**  
Rabbit  
**Isotype:**  
IgG  
**Purification Method:**  
Protein A purification

**Clone ID:**  
240150A1  
**Reactivity:**  
human  
**Immunogen Catalog Number:**  
Ag33182

**Conjugate:**  
Unconjugated  
**Full name:**  
tight junction protein 1 (zona occludens 1)  
**Gene ID:**  
7082

## Detection Antibody Information

**Catalog Number:**  
82870-9-PBS  
**Host:**  
Rabbit  
**Isotype:**  
IgG  
**Purification Method:**  
Protein A purification

**Clone ID:**  
240150C5  
**Reactivity:**  
human  
**GenBank:**  
BC111712  
**Immunogen Catalog Number:**  
Ag33182

**Conjugate:**  
Unconjugated  
**Full name:**  
tight junction protein 1 (zona occludens 1)  
**Gene ID:**  
7082

## Applications

**Tested Applications:**  
Sandwich ELISA

**Range:**  
125-8000 pg/mL (Sandwich ELISA)

**Recommended Dilutions:**  
It is recommended that this reagent should be titrated in each testing system to obtain optimal results.

## Product Information

MP00349-4 targets ZO-1 in immunoassays as a matched antibody pair. Validated in Sandwich ELISA.

Capture antibody: ZO1 Recombinant antibody, PBS Only (Capture) 82870-2-PBS (240150A1). 100 µg. Concentration 1 mg/mL.

Detection antibody: ZO1 Recombinant antibody, PBS Only (Detector) 82870-9-PBS (240150C5). 100 µg. Concentration 1 mg/mL.

Alternative ZO-1 matched antibody pairs: MP00349-1, MP00349-2, MP00349-3

Unconjugated rabbit recombinant monoclonal antibody pair in PBS only storage buffer at a concentration of 1 mg/mL, ready for conjugation. Created using Proteintech's proprietary in-house recombinant technology. Recombinant production enables unrivalled batch-to-batch consistency, easy scale-up, and future security of supply.

Matched antibody pairs are designed for use in a variety of assays and platforms that require matched antibody pairs.

Antibody use should be optimized for each application and assay.

## Storage

**Storage:**  
Store at -80°C.  
**Storage buffer:**  
PBS only

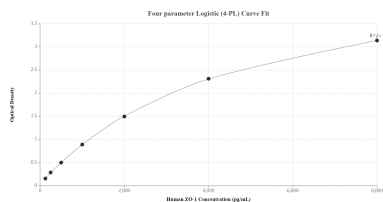
For technical support and original validation data for this product please contact:

T: 1 (888) 4PTGLAB (1-888-478-4522) (toll free in USA), or 1(312) 455-8498 (outside USA)

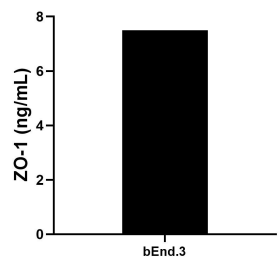
E: [proteintech@ptglab.com](mailto:proteintech@ptglab.com)  
W: [ptglab.com](http://ptglab.com)

**This product is exclusively available under Proteintech Group brand and is not available to purchase from any other manufacturer.**

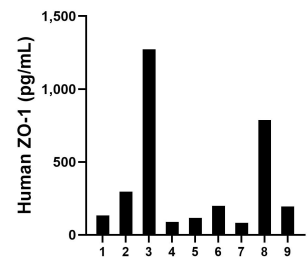
## Selected Validation Data



Sandwich ELISA standard curve of MP00349-4, Human ZO-1 Recombinant Matched Antibody Pair - PBS only. 82870-2-PBS was coated to a plate as the capture antibody and incubated with serial dilutions of standard Ag33182. 82870-9-PBS was HRP conjugated as the detection antibody. Range: 125-8000 pg/mL



The mean ZO-1 concentration was determined to be 7.5 ng/mL in bEnd.3 cell extract based on a 1.8 mg/mL extract load.



Serum of nine individual healthy human donors was measured. The ZO-1 concentration of detected samples was determined to be 352.4 pg/mL with a range of 83.4 - 1,272.8 pg/mL