

IGFBP1 Recombinant Matched Antibody Pair, PBS Only

Catalog Number: **MP00355-3**

Capture Antibody Information

Catalog Number:
83347-2-PBS
Host:
Rabbit
Isotype:
IgG
Purification Method:
Protein A purification

Clone ID:
240263B5
Reactivity:
human

Conjugate:
Unconjugated
Full name:
IGF binding protein 1
Gene ID:
3484

Detection Antibody Information

Catalog Number:
83347-4-PBS
Host:
Rabbit
Isotype:
IgG
Purification Method:
Protein A purification

Clone ID:
240263H8
Reactivity:
human
GenBank:
NM_000596.4

Conjugate:
Unconjugated
Full name:
IGF binding protein 1
Gene ID:
3484

Applications

Tested Applications:
Cytometric bead array, Sandwich ELISA

Range:
0.313-40 ng/mL (Cytometric Bead Array)
62.5-4000 pg/mL (Sandwich ELISA)

Recommended Dilutions:
It is recommended that this reagent should be titrated in each testing system to obtain optimal results.

Product Information

MP00355-3 targets IGFBP1 in immunoassays as a matched antibody pair. Validated in Cytometric bead array, Sandwich ELISA.

Capture antibody: IGFBP1 Recombinant antibody, PBS Only (Capture) 83347-2-PBS (240263B5). 100 µg. Concentration 1 mg/mL.

Detection antibody: IGFBP1 Recombinant antibody, PBS Only (Detector) 83347-4-PBS (240263H8). 100 µg. Concentration 1 mg/mL.

Alternative IGFBP1 matched antibody pairs: MP00355-1, MP00355-2

Unconjugated rabbit recombinant monoclonal antibody pair in PBS only storage buffer at a concentration of 1 mg/mL, ready for conjugation. Created using Proteintech's proprietary in-house recombinant technology. Recombinant production enables unrivalled batch-to-batch consistency, easy scale-up, and future security of supply.

Matched antibody pairs are designed for use in a variety of assays and platforms that require matched antibody pairs.

Antibody use should be optimized for each application and assay.

Storage

Storage:
Store at -80°C.
Storage buffer:
PBS only

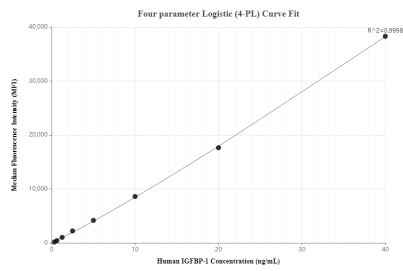
For technical support and original validation data for this product please contact:

T: 1 (888) 4PTGLAB (1-888-478-4522) (toll free in USA), or 1(312) 455-8498 (outside USA)

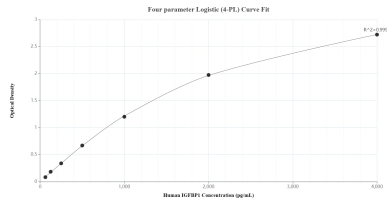
E: proteintech@ptglab.com
W: ptglab.com

This product is exclusively available under Proteintech Group brand and is not available to purchase from any other manufacturer.

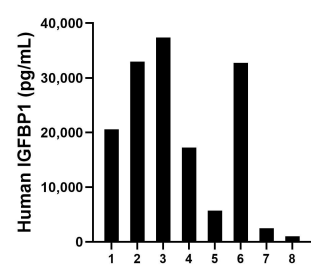
Selected Validation Data



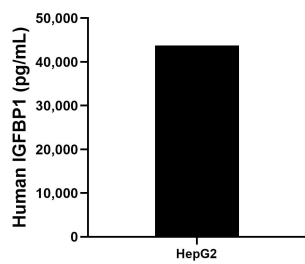
Cytometric bead array standard curve of MP00355-3, IGFBP1 Recombinant Matched Antibody Pair, PBS Only. Capture antibody: 83347-2-PBS. Detection antibody: 83347-4-PBS. Standard: Eg0951. Range: 0.313-40 ng/mL



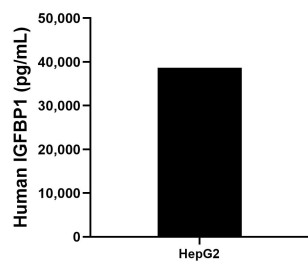
Sandwich ELISA standard curve of MP00355-3, Human IGFBP1 Recombinant Matched Antibody Pair - PBS only. 83347-2-PBS was coated to a plate as the capture antibody and incubated with serial dilutions of standard Eg0951. 83347-4-PBS was HRP conjugated as the detection antibody. Range: 62.5-4000 pg/mL



Serum of eight individual healthy human donors was measured. The IGFBP1 concentration of detected samples was determined to be 18,764.2 pg/mL with a range of 1,025.1 - 37,369.6 pg/mL



HepG2 cells were cultured in DMEM supplemented with 10% fetal bovine serum, 2.5 mM L-glutamine, 100 U/mL penicillin, and 100 µg/mL streptomycin sulfate. An aliquot of the cell culture supernate was removed, assayed for human IGFBP1, and measured 43,726.4 pg/mL



The mean human IGFBP1 concentration was determined to be 38,698.4 pg/mL in HepG2 cell extract based on a 1.5 mg/mL extract load.