

For Research Use Only



AGPAT2 Recombinant Matched Antibody Pair, PBS Only

Catalog Number:MP00360-4

Capture Antibody Information

Catalog Number:
83349-3-PBS
Host:
Rabbit
Isotype:
IgG
Purification Method:
Protein A purification

Clone ID:
240153C2
Reactivity:
human
Immunogen Catalog Number:
Ag34761

Conjugate:
Unconjugated
Full name:
1-acylglycerol-3-phosphate O-acyltransferase 2 (lysophosphatidic acid acyltransferase, beta)
Gene ID:
10555

Detection Antibody Information

Catalog Number:
83349-4-PBS
Host:
Rabbit
Isotype:
IgG
Purification Method:
Protein A purification

Clone ID:
240153H1
Reactivity:
human
GenBank:
BC019292
Immunogen Catalog Number:
Ag34761

Conjugate:
Unconjugated
Full name:
1-acylglycerol-3-phosphate O-acyltransferase 2 (lysophosphatidic acid acyltransferase, beta)
Gene ID:
10555

Applications

Tested Applications:
Sandwich ELISA

Range:
78.1-5000 pg/mL (Sandwich ELISA)

Recommended Dilutions:
It is recommended that this reagent should be titrated in each testing system to obtain optimal results.

Product Information

MP00360-4 targets AGPAT2 in immunoassays as a matched antibody pair. Validated in Sandwich ELISA.

Capture antibody: AGPAT2 Recombinant antibody, PBS Only (Capture) 83349-3-PBS (240153C2). 100 µg. Concentration 1 mg/mL.

Detection antibody: AGPAT2 Recombinant antibody, PBS Only (Capture/Detector) 83349-4-PBS (240153H1). 100 µg. Concentration 1 mg/mL.

Unconjugated rabbit recombinant monoclonal antibody pair in PBS only storage buffer at a concentration of 1 mg/mL, ready for conjugation. Created using Proteintech's proprietary in-house recombinant technology. Recombinant production enables unrivalled batch-to-batch consistency, easy scale-up, and future security of supply.

Matched antibody pairs are designed for use in a variety of assays and platforms that require matched antibody pairs.

Antibody use should be optimized for each application and assay.

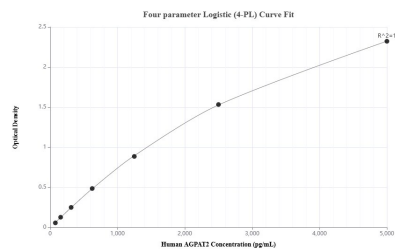
Storage

Storage:
Store at -80°C.
Storage buffer:
PBS only

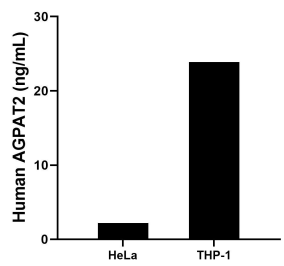
For technical support and original validation data for this product please contact:
T: 1 (888) 4PTGLAB (1-888-478-4522) (toll free in USA), or 1(312) 455-8498 (outside USA)
E: proteintech@ptglab.com
W: ptglab.com

This product is exclusively available under Proteintech Group brand and is not available to purchase from any other manufacturer.

Selected Validation Data



Sandwich ELISA standard curve of MP00360-4, Human AGPAT2 Recombinant Matched Antibody Pair - PBS only. 83349-3-PBS was coated to a plate as the capture antibody and incubated with serial dilutions of standard Ag34761. 83349-4-PBS was HRP conjugated as the detection antibody. Range: 78.1-5000 pg/mL



The mean AGPAT2 concentration was determined to be 2.20 ng/mL in HeLa cell extract based on a 2.0 mg/mL extract load and 23.90 ng/mL in THP-1 cell extract based on a 2.0 mg/mL extract load.