

# Osteopontin Recombinant Matched Antibody Pair, PBS Only

Catalog Number: **MP00375-1**

## Capture Antibody Information

**Catalog Number:**

83341-2-PBS

**Host:**

Rabbit

**Isotype:**

IgG

**Purification Method:**

Protein A purification

**Clone ID:**

240206B7

**Reactivity:**

human, mouse

**Conjugate:**

Unconjugated

**Full name:**

secreted phosphoprotein 1

**Gene ID:**

6696

## Detection Antibody Information

**Catalog Number:**

83341-1-PBS

**Host:**

Rabbit

**Isotype:**

IgG

**Purification Method:**

Protein A purification

**Clone ID:**

240206A2

**Reactivity:**

human, mouse

**GenBank:**

BC007016

**Conjugate:**

Unconjugated

**Full name:**

secreted phosphoprotein 1

**Gene ID:**

6696

## Applications

**Tested Applications:**

Cytometric bead array, Sandwich ELISA

**Range:**

0.313-40 ng/mL (Cytometric Bead Array)  
0.313-20 ng/mL (Sandwich ELISA)

**Recommended Dilutions:**

It is recommended that this reagent should be titrated in each testing system to obtain optimal results.

## Product Information

MP00375-1 targets Osteopontin in immunoassays as a matched antibody pair. Validated in Cytometric bead array, Sandwich ELISA.

Capture antibody: Osteopontin Recombinant antibody, PBS Only (Capture) 83341-2-PBS (240206B7). 100 µg. Concentration 1 mg/mL.

Detection antibody: Osteopontin Recombinant antibody, PBS Only (Detector) 83341-1-PBS (240206A2). 100 µg. Concentration 1 mg/mL.

Unconjugated rabbit recombinant monoclonal antibody pair in PBS only storage buffer at a concentration of 1 mg/mL, ready for conjugation. Created using Proteintech's proprietary in-house recombinant technology. Recombinant production enables unrivalled batch-to-batch consistency, easy scale-up, and future security of supply.

Matched antibody pairs are designed for use in a variety of assays and platforms that require matched antibody pairs.

Antibody use should be optimized for each application and assay.

## Storage

**Storage:**

Store at -80°C.

**Storage buffer:**

PBS only

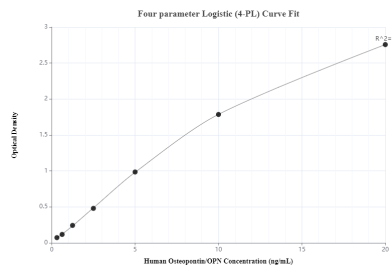
For technical support and original validation data for this product please contact:

T: 1 (888) 4PTGLAB (1-888-478-4522) (toll free in USA), or 1(312) 455-8498 (outside USA)

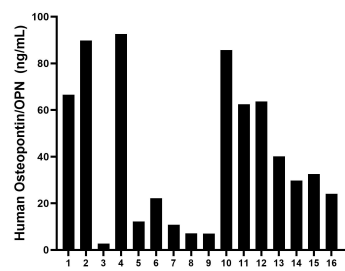
E: [proteintech@ptglab.com](mailto:proteintech@ptglab.com)  
W: [ptglab.com](http://ptglab.com)

**This product is exclusively available under Proteintech Group brand and is not available to purchase from any other manufacturer.**

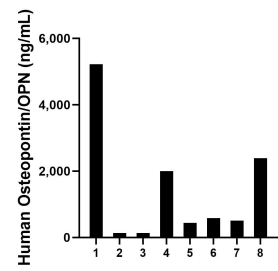
Selected Validation Data



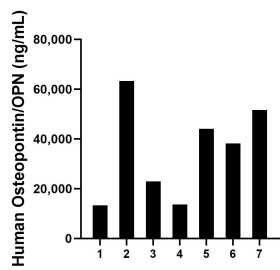
Sandwich ELISA standard curve of MP00375-1, Human Osteopontin Recombinant Matched Antibody Pair - PBS only. 83341-2-PBS was coated to a plate as the capture antibody and incubated with serial dilutions of standard Eg0754. 83341-1-PBS was HRP conjugated as the detection antibody. Range: 0.313-20 ng/mL



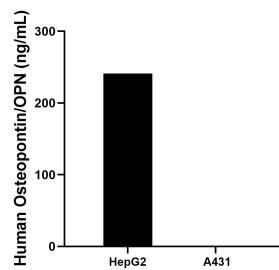
Plasma of sixteen individual healthy human donors was measured. The Osteopontin concentration of detected samples was determined to be 40.58 ng/mL with a range of 7.07 - 92.57 ng/mL



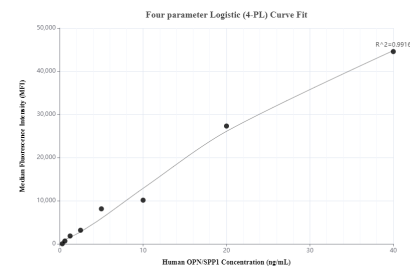
Urine of eight individual healthy human donors was measured. The Osteopontin concentration of detected samples was determined to be 1,426.23 ng/mL with a range of 136.64 - 5,219.95 ng/mL



Milk of seven individual healthy human donors was measured. The Osteopontin concentration of detected samples was determined to be 35,304.3 ng/mL with a range of 13,338.9 - 63,338.0 ng/mL



HepG2 (human hepatocellular carcinoma cells) were cultured in DMEM supplemented with 10% fetal bovine serum, 2.5 mM L-glutamine, 100 U/mL penicillin, and 100 µg/mL streptomycin sulfate. An aliquot of the cell culture supernate was removed, assayed for human Osteopontin, and measured 240.9 ng/mL. A431 were cultured in DMEM supplemented with 10% fetal bovine serum, 2.5 mM L-glutamine, 100 U/mL penicillin, and 100 µg/mL



Cytometric bead array standard curve of MP00375-1, Osteopontin Recombinant Matched Antibody Pair, PBS Only. Capture antibody: 83341-2-PBS. Detection antibody: 83341-1-PBS. Standard: Eg0754. Range: 0.313-40 ng/mL