

Mouse ICOSLG/B7-H2/CD275 Recombinant Matched Antibody Pair, PBS Only

Catalog Number: **MP00376-4**

Capture Antibody Information

Catalog Number:
83375-5-PBS
Host:
Rabbit
Isotype:
IgG
Purification Method:
Protein A purification

Clone ID:
240243B11
Reactivity:
mouse

Conjugate:
Unconjugated
Full name:
icos ligand
Gene ID:
50723

Detection Antibody Information

Catalog Number:
83375-2-PBS
Host:
Rabbit
Isotype:
IgG
Purification Method:
Protein A purification

Clone ID:
240243G5
Reactivity:
mouse
GenBank:
NM_015790.3

Conjugate:
Unconjugated
Full name:
icos ligand
Gene ID:
50723

Applications

Tested Applications:
Sandwich ELISA

Range:
62.5-4000 pg/mL (Sandwich ELISA)

Recommended Dilutions:
It is recommended that this reagent should be titrated in each testing system to obtain optimal results.

Product Information

MP00376-4 targets ICOSLG/B7-H2/CD275 in immunoassays as a matched antibody pair. Validated in Sandwich ELISA.

Capture antibody: Mouse B7-H2/ICOSLG Recombinant antibody, PBS Only (Capture) 83375-5-PBS (240243B11). 100 µg. Concentration 1 mg/mL.

Detection antibody: Mouse ICOSLG/B7-H2/CD275 Recombinant antibody, PBS Only (Capture/Detector) 83375-2-PBS (240243G5). 100 µg. Concentration 1 mg/mL.

Unconjugated rabbit recombinant monoclonal antibody pair in PBS only storage buffer at a concentration of 1 mg/mL, ready for conjugation. Created using Proteintech's proprietary in-house recombinant technology. Recombinant production enables unrivalled batch-to-batch consistency, easy scale-up, and future security of supply.

Matched antibody pairs are designed for use in a variety of assays and platforms that require matched antibody pairs.

Antibody use should be optimized for each application and assay.

Storage

Storage:
Store at -80°C.
Storage buffer:
PBS only

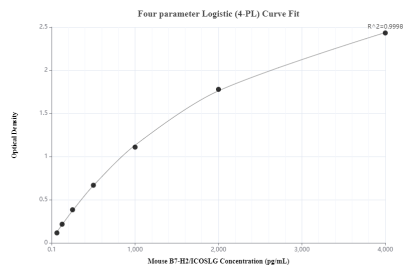
For technical support and original validation data for this product please contact:

T: 1 (888) 4PTGLAB (1-888-478-4522) (toll free
in USA), or 1(312) 455-8498 (outside USA)

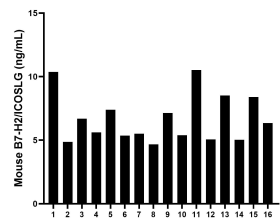
E: proteintech@ptglab.com
W: ptglab.com

This product is exclusively available under Proteintech Group brand and is not available to purchase from any other manufacturer.

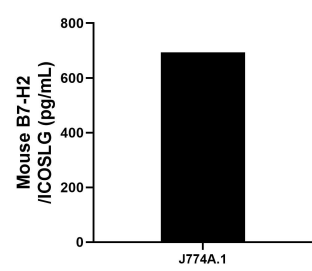
Selected Validation Data



Sandwich ELISA standard curve of MP00376-4, Mouse ICOSLG/B7-H2/CD275 Monoclonal Matched Antibody Pair - PBS only. 83375-5-PBS was coated to a plate as the capture antibody and incubated with serial dilutions of standard Ego923. 83375-2-PBS was HRP conjugated as the detection antibody. Range: 62.5-4000 pg/mL



Serum of sixteen individual healthy mice were measured. The mouse ICOSLG/B7-H2/CD275 concentration of detected samples was determined to be 6.7 ng/mL with a range of 4.7 - 10.5 ng/mL.



J774A.1 mouse reticulum cell sarcoma macrophage cells were cultured in DMEM supplemented with 10% fetal bovine serum, 2.5 mM L-glutamine, 100 U/mL penicillin and 100 µg/mL streptomycin sulfate. An aliquot of the cell culture supernatant was removed, assayed for mouse ICOSLG/B7-H2/CD275 and measured 692.8 pg/mL