

XRCC5 Recombinant Matched Antibody Pair, PBS Only

Catalog Number: MP00384-2

Capture Antibody Information

Catalog Number:
80325-3-PBS
Host:
Rabbit
Isotype:
IgG
Purification Method:
Protein A purification

Clone ID:
240301E10
Reactivity:
human
Immunogen Catalog Number:
Ag9454

Conjugate:
Unconjugated
Full name:
X-ray repair complementing defective repair in Chinese hamster cells 5 (double-strand-break rejoining)
Gene ID:
7520

Detection Antibody Information

Catalog Number:
80325-2-PBS
Host:
Rabbit
Isotype:
IgG
Purification Method:
Protein A purification

Clone ID:
240301A1
Reactivity:
human
GenBank:
BC019027
Immunogen Catalog Number:
Ag9454

Conjugate:
Unconjugated
Full name:
X-ray repair complementing defective repair in Chinese hamster cells 5 (double-strand-break rejoining)
Gene ID:
7520

Applications

Tested Applications:
Cytometric bead array, Sandwich ELISA

Range:
0.625-80 ng/mL (Cytometric Bead Array)
78.1-5000 pg/mL (Sandwich ELISA)

Recommended Dilutions:
It is recommended that this reagent should be titrated in each testing system to obtain optimal results.

Product Information

MP00384-2 targets XRCC5 in immunoassays as a matched antibody pair. Validated in Cytometric bead array, Sandwich ELISA.

Capture antibody: XRCC5 Recombinant antibody, PBS Only (Capture) 80325-3-PBS (240301E10). 100 µg. Concentration 1 mg/mL.

Detection antibody: XRCC5 Recombinant antibody, PBS Only (Detector) 80325-2-PBS (240301A1). 100 µg. Concentration 1 mg/mL.

Alternative XRCC5 matched antibody pairs: MP00384-1, MP00384-3

Unconjugated rabbit recombinant monoclonal antibody pair in PBS only storage buffer at a concentration of 1 mg/mL, ready for conjugation. Created using Proteintech's proprietary in-house recombinant technology. Recombinant production enables unrivalled batch-to-batch consistency, easy scale-up, and future security of supply.

Matched antibody pairs are designed for use in a variety of assays and platforms that require matched antibody pairs.

Antibody use should be optimized for each application and assay.

Storage

Storage:
Store at -80°C.
Storage buffer:
PBS only

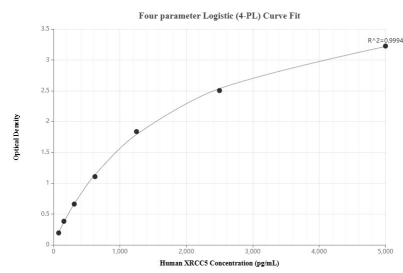
For technical support and original validation data for this product please contact:

T: 1 (888) 4PTGLAB (1-888-478-4522) (toll free in USA), or 1(312) 455-8498 (outside USA)

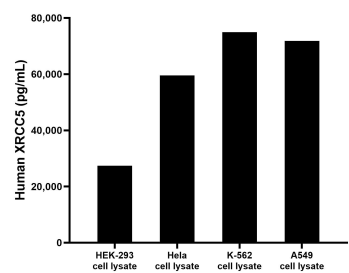
E: proteintech@ptglab.com
W: ptglab.com

This product is exclusively available under Proteintech Group brand and is not available to purchase from any other manufacturer.

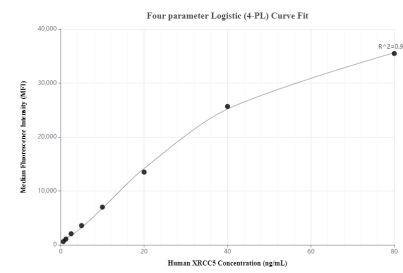
Selected Validation Data



Sandwich ELISA standard curve of MP00384-2, Human XRCC5 Recombinant Matched Antibody Pair - PBS only. 80325-3-PBS was coated to a plate as the capture antibody and incubated with serial dilutions of standard Ag9454. 80325-2-PBS was HRP conjugated as the detection antibody. Range: 78.1-5000 pg/mL



HEK-293, HeLa, K-562 and A549 cell lysates were measured. The human XRCC5 concentration of detected samples was determined to be 27,396.5 pg/mL (based on a 1.20 mg/mL extract load) in HEK-293 cell lysate, 59,588.9 pg/mL (based on a 1.50 mg/mL extract load) in HeLa cell lysate, 74,969.1 pg/mL (based on a 2.10 mg/mL extract load) in K-562 cell lysate and 71,822.7 pg/mL (based on a 1.00 mg/mL extract load) in A549 cell lysate.



Cytometric bead array standard curve of MP00384-2, XRCC5 Recombinant Matched Antibody Pair, PBS Only. Capture antibody: 80325-3-PBS. Detection antibody: 80325-2-PBS. Standard: Ag9454. Range: 0.625-80 ng/mL